

IκB alpha Rabbit Polyclonal Antibody

Description

Product type	Primary Antibody
Code	BT-AP02141
Host	Rabbit
Isotype	IgG
Size	20ul, 50ul, 100ul
Immunogen	Recombinant Protein of IκB α
Mol wt	N/A
Species reactivity	Human, Mouse, Rat
Clonality	Polyclonal
Recommended application	WB, IHC-p, IF
Concentration	1 mg/ml
Full name	NF-kappa-B inhibitor alpha
Synonyms	NF-kappa-B inhibitor alpha (I-kappa-B-alpha;IκB-alpha;IkappaBalpha;Major histocompatibility complex enhancer-binding protein MAD3); NF-kappa-B inhibitor alpha; I-kappa-B-alpha; IκB-alpha; IkappaBalpha; Major histocompatibility complex enhancer-binding protein MAD3)

This product is for research use only, not for use in human, therapeutic or diagnostic procedure.

Background

This gene encodes a member of the NF-kappa-B inhibitor family| which contain multiple ankrin repeat domains. The encoded protein interacts with REL dimers to inhibit NF-kappa-B/REL complexes which are involved in inflammatory responses. The encoded protein moves between the cytoplasm and the nucleus via a nuclear localization signal and CRM1-mediated nuclear export. Mutations in this gene have been found in ectodermal dysplasia anhidrotic with T-cell immunodeficiency autosomal dominant disease.

Recommended Dilution

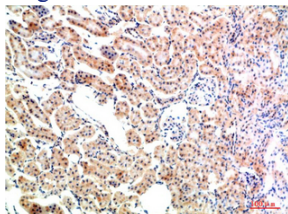
WB: 1: 500 - 1: 2000

IHC-p: 1: 50 - 1: 300

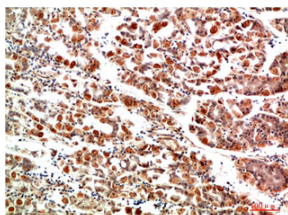
ELISA: 1: 20000

Not yet tested in other applications.

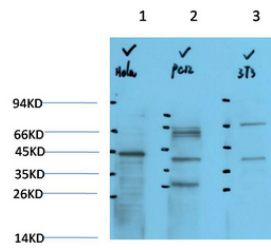
Images



Immunohistochemical analysis of paraffin-embedded Rat Kidney Tissue using IκB α Rabbit pAb diluted at 1:200



Immunohistochemical analysis of paraffin-embedded Human Stomach Tissue using IκB α Rabbit pAb diluted at 1:200



Western blot analysis of 1) HeLa Cell Lysate, 2)PC12 Cell Lysate, 3) 3T3 Cell Lysate using I κ B α
Rabbit pAb diluted at 1:1000.

Storage

-20°C for 1 year

501 Changsheng S Rd, Nanhu Dist, Jiaxing, Zhejiang, China

Tel: 86 21 31007137 | E-mail: save@bt-laboratory.com | www.bt-laboratory.com