

Cot Polyclonal Antibody

Description

Product type	Primary Antibody
Code	BT-AP02143
Host	Rabbit
Isotype	IgG
Size	20ul, 50ul, 100ul
Immunogen	The antiserum was produced against synthesized peptide derived from human MAP3K8. AA range:366-415
Mol wt	52925
Species reactivity	Human, Mouse, Rat
Clonality	Polyclonal
Recommended application	WB, IHC-p, ELISA
Concentration	1 mg/ml
Full name	Cot Antibody
Synonyms	MAP3K8; COT; ESTF; Mitogen-activated protein kinase kinase kinase 8; Cancer Osaka thyroid oncogene; Proto-oncogene c-Cot; Serine/threonine-protein kinase cot; Tumor progression locus 2; TPL-2

This product is for research use only, not for use in human, therapeutic or diagnostic procedure.

Background

MAP3K8 is an oncogene that encodes a member of the serine/threonine protein kinase family. The mitogen-activated protein kinase kinase kinase 8 localizes to the cytoplasm and can activate both the MAP kinase and JNK kinase pathways. This protein was shown to activate I κ B kinases, and thus induce the nuclear production of NF- κ B. This protein was also found to promote the production of TNF- α and IL-2 during T lymphocyte activation. MAP3K8 may also utilize a downstream in-frame translation start codon, and thus produce an isoform containing a shorter N-terminus. The shorter isoform has been shown to display weaker transforming activity. Alternate splicing results in multiple transcript variants that encode the same protein.

Recommended Dilution

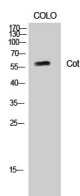
WB: 1: 500 - 1: 2000

IHC: 1: 100 - 1: 300

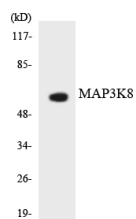
ELISA: 1: 5000

Not yet tested in other applications.

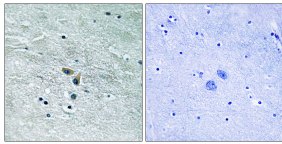
Images



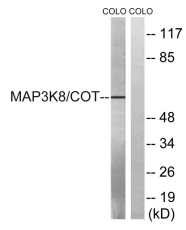
Western Blot analysis of COLO cells using Cot Polyclonal Antibody



Western blot analysis of the lysates from HeLa cells using MAP3K8 antibody.



Immunohistochemistry analysis of paraffin-embedded human brain tissue, using MAP3K8 Antibody. The picture on the right is blocked with the synthesized peptide.



Western blot analysis of lysates from COLO205 cells, treated with Insulin 0.01U/ml 15', using MAP3K8 Antibody. The lane on the right is blocked with the synthesized peptide.

Storage

-20°C for one year

501 Changsheng S Rd, Nanhu Dist, Jiaxing, Zhejiang, China

Tel: 86 21 31007137 | E-mail: save@bt-laboratory.com | www.bt-laboratory.com