

## NF-E4 Polyclonal Antibody

### Description

<b>Product type</b>	Primary Antibody
<b>Code</b>	BT-AP02168
<b>Host</b>	Rabbit
<b>Isotype</b>	IgG
<b>Size</b>	20ul, 50ul, 100ul
<b>Immunogen</b>	Synthesized peptide derived from human NF-E4
<b>Mol wt</b>	N/A
<b>Species reactivity</b>	Human, Rat, Mouse
<b>Clonality</b>	Polyclonal
<b>Recommended application</b>	IHC-p, IF, WB
<b>Concentration</b>	1 mg/ml
<b>Full name</b>	NF-E4
<b>Synonyms</b>	NF-E4; Transcription factor NF-E4

This product is for research use only, not for use in human, therapeutic or diagnostic procedure.

### Background

The erythroid-specific protein encoded by this gene| and the ubiquitous transcription factor CP2| form the stage selector protein (SSP) complex| which is involved in preferential expression of the gamma-globin genes in fetal erythroid cells. Alternate use of an in-frame upstream non-AUG (CUG) translation initiation codon| and a downstream AUG codon| results in two isoforms. While the long isoform (22 kDa) acts as an activator| the short isoform (14 kDa) has been shown to repress gamma-globin gene expression. This gene is located in an intron of the FBXL13 gene on the opposite strand.

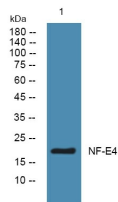
### Recommended Dilution

WB: 1: 500 - 1: 2000

IHC-p: 1: 50 - 1: 200

Not yet tested in other applications.

### Images



Western blot analysis of lysates from K562 cells, primary antibody was diluted at 1:1000, 4°C overnight

### Storage

-20°C for 1 year