

## DCDC1 Rabbit Polyclonal Antibody

### Description

Product type	Primary Antibody
Code	BT-AP02172
Host	Rabbit
Isotype	IgG
Size	20ul, 50ul, 100ul
Immunogen	Synthesized peptide derived from human DCDC1
Mol wt	N/A
Species reactivity	Human, Rat, Mouse
Clonality	Polyclonal
Recommended application	WB
Concentration	1 mg/ml
Full name	DCDC1
Synonyms	DCDC1; Doublecortin domain-containing protein 1

This product is for research use only, not for use in human, therapeutic or diagnostic procedure.

### Background

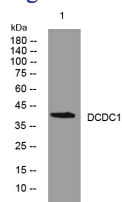
This gene encodes a member of the doublecortin family. The protein encoded by this gene is a hydrophilic intracellular protein. It contains a single doublecortin domain and is unable to bind microtubules and to regulate microtubule polymerization. This gene is mainly expressed in adult testis. It does not have a mouse homolog.

### Recommended Dilution

WB: 1: 500 - 1: 2000

Not yet tested in other applications.

### Images



Western blot analysis of lysates from MCF-7 cells, primary antibody was diluted at 1:1000, 4°C overnight

### Storage

-20°C for 1 year

501 Changsheng S Rd, Nanhu Dist, Jiaxing, Zhejiang, China

Tel: 86 21 31007137 | E-mail: [save@bt-laboratory.com](mailto:save@bt-laboratory.com) | [www.bt-laboratory.com](http://www.bt-laboratory.com)