

DCLK1 Rabbit Polyclonal Antibody

Description

Product type	Primary Antibody
Code	BT-AP02175
Host	Rabbit
Isotype	IgG
Size	20ul, 50ul, 100ul
Immunogen	Synthesized peptide derived from human DCLK1
Mol wt	81400
Species reactivity	Human, Mouse, Rat
Clonality	Polyclonal
Recommended application	WB
Concentration	1 mg/ml
Full name	DCLK1
Synonyms	DCLK1

This product is for research use only, not for use in human, therapeutic or diagnostic procedure.

Background

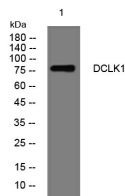
This gene encodes a member of the protein kinase superfamily and the doublecortin family. The protein encoded by this gene contains two N-terminal doublecortin domains| which bind microtubules and regulate microtubule polymerization| a C-terminal serine/threonine protein kinase domain| which shows substantial homology to Ca²⁺/calmodulin-dependent protein kinase| and a serine/proline-rich domain in between the doublecortin and the protein kinase domains| which mediates multiple protein-protein interactions. The microtubule-polymerizing activity of the encoded protein is independent of its protein kinase activity. The encoded protein is involved in several different cellular processes| including neuronal migration| retrograde transport| neuronal apoptosis and neurogenesis. This gene is up-regulated by brain-derived neurotrophic factor and associated with memory and general cognitive abilities. Multiple transcript variants generated by two alternative promoter usage and alternative splicing have been reported| but the full-length nature and biological validity of some variants have not been defined. These variants encode different isoforms| which are differentially expressed and have different kinase activities.

Recommended Dilution

WB: 1: 500 - 1: 2000

Not yet tested in other applications.

Images



Western blot analysis of lysates from A549 cells, primary antibody was diluted at 1:1000, 4°C overnight

Storage

-20°C for 1 year