

CPE Polyclonal Antibody

Description

Product type	Primary Antibody
Code	BT-AP02179
Host	Rabbit
Isotype	IgG
Size	20ul, 50ul, 100ul
Immunogen	The antiserum was produced against synthesized peptide derived from human CPE. AA range:271-320
Mol wt	53151
Species reactivity	Human, Mouse, Rat
Clonality	Polyclonal
Recommended application	WB, ELISA
Concentration	1 mg/ml
Full name	CPE Antibody
Synonyms	CPE; Carboxypeptidase E; CPE; Carboxypeptidase H; CPH; Enkephalin convertase; Prohormone-processing carboxypeptidase

This product is for research use only, not for use in human, therapeutic or diagnostic procedure.

Background

CPE encodes a member of the M14 family of metalloproteases. The encoded preproprotein is proteolytically processed to generate the mature peptidase. This peripheral membrane protein cleaves C-terminal amino acid residues and is involved in the biosynthesis of peptide hormones and neurotransmitters, including insulin. Carboxypeptidase E may also function independently of its peptidase activity, as a neurotrophic factor that promotes neuronal survival, and as a sorting receptor that binds to regulated secretory pathway proteins, including prohormones. Mutations in CPE are implicated in type 2 diabetes.

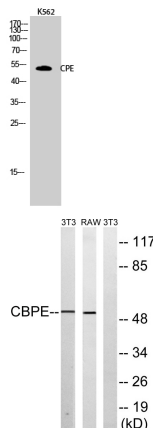
Recommended Dilution

WB: 1: 500 - 1: 2000

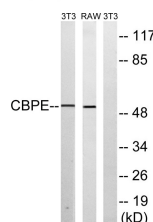
ELISA: 1: 10000

Not yet tested in other applications.

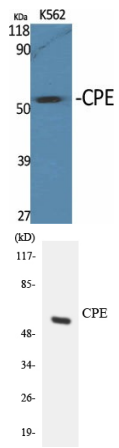
Images



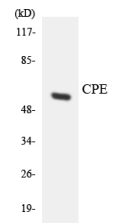
Western Blot analysis of K562 cells using CPE Polyclonal Antibody



Western blot analysis of lysates from RAW264.7 and NIH/3T3 cells, using CPE Antibody. The lane on the right is blocked with the synthesized peptide.



Western Blot analysis of various cells using CPE Polyclonal Antibody



Western blot analysis of the lysates from HeLa cells using CPE antibody.

Storage

-20°C for one year

501 Changsheng S Rd, Nanhu Dist, Jiaxing, Zhejiang, China

Tel: 86 21 31007137 | E-mail: save@bt-laboratory.com | www.bt-laboratory.com