

cPLA2-Delta Polyclonal Antibody

Description

Product type	Primary Antibody
Code	BT-AP02186
Host	Rabbit
Isotype	IgG
Size	20ul, 50ul, 100ul
Immunogen	The antiserum was produced against synthesized peptide derived from human PLA2G4D. AA range:531-580
Mol wt	91956
Species reactivity	Human
Clonality	Polyclonal
Recommended application	IHC-p, ELISA
Concentration	1 mg/ml
Full name	cPLA2-delta Antibody
Synonyms	PLA2G4D; Cytosolic phospholipase A2 delta; cPLA2-delta; Phospholipase A2 group IVD

This product is for research use only, not for use in human, therapeutic or diagnostic procedure.

Background

The phospholipase A2 enzyme family, including PLA2G4D, catalyze the hydrolysis of glycerophospholipids at the sn-2 position and then liberate free fatty acids and lysophospholipids (Chiba et al. 2004 [PubMed 14709560]).

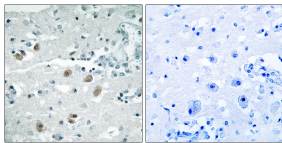
Recommended Dilution

IHC: 1: 100 - 1: 300

ELISA: 1: 40000

Not yet tested in other applications.

Images



Immunohistochemistry analysis of paraffin-embedded human brain, using PLA2G4D Antibody. The picture on the right is blocked with the synthesized peptide.

Storage

-20°C for one year

501 Changsheng S Rd, Nanhu Dist, Jiaxing, Zhejiang, China

Tel: 86 21 31007137 | E-mail: save@bt-laboratory.com | www.bt-laboratory.com