

cPLA2-Epsilon Polyclonal Antibody

Description

Product type	Primary Antibody
Code	BT-AP02187
Host	Rabbit
Isotype	IgG
Size	20ul, 50ul, 100ul
Immunogen	The antiserum was produced against synthesized peptide derived from human PLA2G4E. AA range:401-450
Mol wt	95687
Species reactivity	Human
Clonality	Polyclonal
Recommended application	IHC-p, ELISA
Concentration	1 mg/ml
Full name	cPLA2-epsilon Antibody
Synonyms	PLA2G4E; Cytosolic phospholipase A2 epsilon; cPLA2-epsilon; Phospholipase A2 group IVE

This product is for research use only, not for use in human, therapeutic or diagnostic procedure.

Background

PLA2G4E (Phospholipase A2 Group IVE) is a Protein Coding gene. Among its related pathways are Metabolism and Glycerophospholipid biosynthesis. GO annotations related to this gene include phospholipase A2 activity and phospholipase activity. An important paralog of this gene is JMJD7-PLA2G4B. calcium-dependent phospholipase A2 that selectively hydrolyzes glycerophospholipids in the sn-2 position. phospholipases are a group of enzymes that hydrolyze phospholipids into fatty acids and other lipophilic molecules. There are four major classes; phospholipase A, phospholipase B, phosphoinositide-specific phospholipase C and phospholipase D.

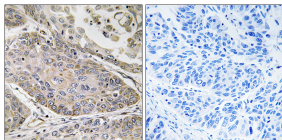
Recommended Dilution

IHC: 1: 100 - 1: 300

ELISA: 1: 40000

Not yet tested in other applications.

Images



Immunohistochemistry analysis of paraffin-embedded human lung carcinoma, using PLA2G4E Antibody. The picture on the right is blocked with the synthesized peptide.

Storage

-20°C for one year