

CPM Polyclonal Antibody

Description

Product type	Primary Antibody
Code	BT-AP02188
Host	Rabbit
Isotype	IgG
Size	20ul, 50ul, 100ul
Immunogen	The antiserum was produced against synthesized peptide derived from human CPM. AA range:71-120
Mol wt	50514
Species reactivity	Human
Clonality	Polyclonal
Recommended application	WB, ELISA
Concentration	1 mg/ml
Full name	CPM Antibody
Synonyms	CPM; Carboxypeptidase M; CPM

This product is for research use only, not for use in human, therapeutic or diagnostic procedure.

Background

Carboxypeptidase M encoded by CPM is a membrane-bound arginine/lysine carboxypeptidase. Its expression is associated with monocyte to macrophage differentiation. This encoded protein contains hydrophobic regions at the amino and carboxy termini and has 6 potential asparagine-linked glycosylation sites. The active site residues of carboxypeptidases A and B are conserved in this protein. Three alternatively spliced transcript variants encoding the same protein have been described for CPM.

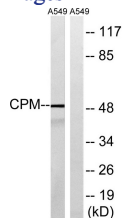
Recommended Dilution

WB: 1: 500 - 1: 2000

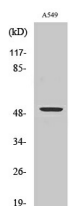
ELISA: 1: 40000

Not yet tested in other applications.

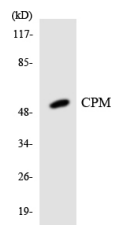
Images



Western blot analysis of lysates from A549 cells, using CPM Antibody. The lane on the right is blocked with the synthesized peptide.



Western Blot analysis of various cells using CPM Polyclonal Antibody



Western blot analysis of the lysates from HT-29 cells using CPM antibody.

Storage

-20°C for one year

501 Changsheng S Rd, Nanhu Dist, Jiaxing, Zhejiang, China

Tel: 86 21 31007137 | E-mail: save@bt-laboratory.com | www.bt-laboratory.com