

CPN cat Polyclonal Antibody

Description

Product type	Primary Antibody
Code	BT-AP02189
Host	Rabbit
Isotype	IgG
Size	20ul, 50ul, 100ul
Immunogen	The antiserum was produced against synthesized peptide derived from human CPN1. AA range:409-458
Mol wt	52286
Species reactivity	Human
Clonality	Polyclonal
Recommended application	WB, ELISA
Concentration	1 mg/ml
Full name	CPN cat Antibody
Synonyms	CPN1; ACBP; Carboxypeptidase N catalytic chain; CPN; Anaphylatoxin inactivator; Arginine carboxypeptidase; Carboxypeptidase N polypeptide 1; Carboxypeptidase N small subunit; Kininase-1; Lysine carbox

This product is for research use only, not for use in human, therapeutic or diagnostic procedure.

Background

Carboxypeptidase N is a plasma metallo-protease that cleaves basic amino acids from the C terminal of peptides and proteins. The enzyme is important in the regulation of peptides like kinins and anaphylatoxins, and has also been known as kininase-1 and anaphylatoxin inactivator. This enzyme is a tetramer comprised of two identical regulatory subunits and two identical catalytic subunits; CPN1 encodes the catalytic subunit. Mutations in CPN1 can be associated with angioedema or chronic urticaria resulting from carboxypeptidase N deficiency.

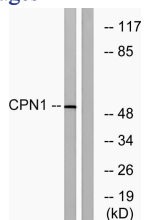
Recommended Dilution

WB: 1: 500 - 1: 2000

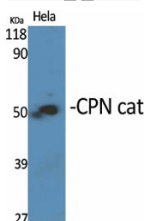
ELISA: 1: 20000

Not yet tested in other applications.

Images

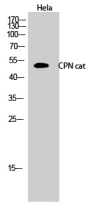


Western blot analysis of lysates from RAW264.7 cells, using CPN1 Antibody. The lane on the right is blocked with the synthesized peptide.



Western Blot analysis of various cells using CPN cat Polyclonal Antibody

Western Blot analysis of HeLa cells using CPN cat Polyclonal Antibody



Storage

-20°C for one year

501 Changsheng S Rd, Nanhu Dist, Jiaxing, Zhejiang, China

Tel: 86 21 31007137 | E-mail: save@bt-laboratory.com | www.bt-laboratory.com