

CPTI-M Polyclonal Antibody

Description

Product type	Primary Antibody
Code	BT-AP02193
Host	Rabbit
Isotype	IgG
Size	20ul, 50ul, 100ul
Immunogen	The antiserum was produced against synthesized peptide derived from human CPT1B. AA range:401-450
Mol wt	87801
Species reactivity	Human
Clonality	Polyclonal
Recommended application	WB, IHC-p, ELISA
Concentration	1 mg/ml
Full name	CPTI-M Antibody
Synonyms	CPT1B; KIAA1670; Carnitine O-palmitoyltransferase 1; muscle isoform; CPT1-M; Carnitine O-palmitoyltransferase I, muscle isoform; CPT I; CPTI-M; Carnitine palmitoyltransferase 1B; Carnitine palmitoylt

This product is for research use only, not for use in human, therapeutic or diagnostic procedure.

Background

Choline kinase (CK) and ethanolamine kinase (EK) catalyze the phosphorylation of choline/ethanolamine to phosphocholine/phosphoethanolamine. This is the first enzyme in the biosynthesis of phosphatidylcholine/phosphatidylethanolamine in all animal cells. The highly purified CKs from mammalian sources and their recombinant gene products have been shown to have EK activity also, indicating that both activities reside on the same protein. The choline kinase-like protein encoded by CHKL belongs to the choline/ethanolamine kinase family; however, its exact function is not known. Read-through transcripts are expressed from this locus that include exons from the downstream CPT1B locus.

Recommended Dilution

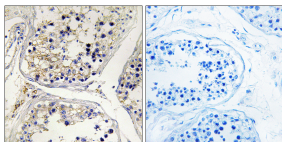
WB: 1: 500 - 1: 2000

IHC: 1: 100 - 1: 300

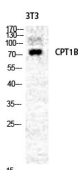
ELISA: 1: 40000

Not yet tested in other applications.

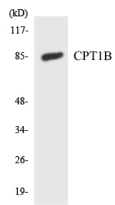
Images



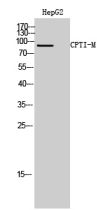
Immunohistochemistry analysis of paraffin-embedded human testis, using CPT1B Antibody. The lane on the right is blocked with the CPT1B peptide.



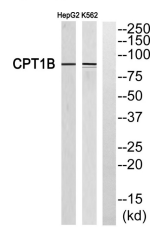
Western Blot analysis of NIH-3T3 cells using CPTI-M Polyclonal Antibody diluted at 1:2000



Western blot analysis of the lysates from HepG2 cells using CPT1B antibody.



Western Blot analysis of HepG2 cells using CPT1-M Polyclonal Antibody diluted at 1:2000



Western blot analysis of CPT1B Antibody. The lane on the right is blocked with the CPT1B peptide.

Storage

-20°C for one year

501 Changsheng S Rd, Nanhu Dist, Jiaxing, Zhejiang, China

Tel: 86 21 31007137 | E-mail: save@bt-laboratory.com | www.bt-laboratory.com