

## DDX1 Rabbit Polyclonal Antibody

### Description

<b>Product type</b>	Primary Antibody
<b>Code</b>	BT-AP02199
<b>Host</b>	Rabbit
<b>Isotype</b>	IgG
<b>Size</b>	20ul, 50ul, 100ul
<b>Immunogen</b>	Synthesized peptide derived from human DDX1
<b>Mol wt</b>	81400
<b>Species reactivity</b>	Human, Mouse, Rat
<b>Clonality</b>	Polyclonal
<b>Recommended application</b>	WB
<b>Concentration</b>	1 mg/ml
<b>Full name</b>	DDX1
<b>Synonyms</b>	DDX1

This product is for research use only, not for use in human, therapeutic or diagnostic procedure.

### Background

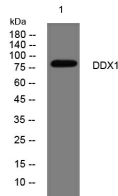
DEAD box proteins| characterized by the conserved motif Asp-Glu-Ala-Asp (DEAD)| are putative RNA helicases. They are implicated in a number of cellular processes involving alteration of RNA secondary structure such as translation initiation| nuclear and mitochondrial splicing| and ribosome and spliceosome assembly. Based on their distribution patterns| some members of this family are believed to be involved in embryogenesis| spermatogenesis| and cellular growth and division. This gene encodes a DEAD box protein of unknown function. It shows high transcription levels in 2 retinoblastoma cell lines and in tissues of neuroectodermal origin.

### Recommended Dilution

WB: 1: 500 - 1: 2000

Not yet tested in other applications.

### Images



Western blot analysis of lysates from HeLa cells, primary antibody was diluted at 1:1000, 4°C overnight

### Storage

-20°C for 1 year