

CRABP-II Polyclonal Antibody

Description

Product type	Primary Antibody
Code	BT-AP02202
Host	Rabbit
Isotype	IgG
Size	20ul, 50ul, 100ul
Immunogen	The antiserum was produced against synthesized peptide derived from human CRABP2. AA range:41-90
Mol wt	15693
Species reactivity	Human, Mouse, Rat
Clonality	Polyclonal
Recommended application	WB, IHC-p, ELISA
Concentration	1 mg/ml
Full name	CRABP-II Antibody
Synonyms	CRABP2; Cellular retinoic acid-binding protein 2; Cellular retinoic acid-binding protein II; CRABP-II

This product is for research use only, not for use in human, therapeutic or diagnostic procedure.

Background

CRABP2 encodes a member of the retinoic acid (RA, a form of vitamin A) binding protein family and lipocalin/cytosolic fatty-acid binding protein family. Cellular retinoic acid binding protein 2 is a cytosol-to-nuclear shuttling protein, which facilitates RA binding to its cognate receptor complex and transfer to the nucleus. It is involved in the retinoid signaling pathway, and is associated with increased circulating low-density lipoprotein cholesterol. Alternatively spliced transcript variants encoding the same protein have been found for CRABP2.

Recommended Dilution

WB: 1: 500 - 1: 2000

IHC: 1: 100 - 1: 300

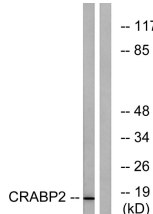
ELISA: 1: 20000

Not yet tested in other applications.

Images



Western Blot analysis of various cells using CRABP-II Polyclonal Antibody



Western blot analysis of lysates from HT-29 cells, using CRABP2 Antibody. The lane on the right is blocked with the synthesized peptide.

Storage

-20°C for one year

501 Changsheng S Rd, Nanhu Dist, Jiaxing, Zhejiang, China

Tel: 86 21 31007137 | E-mail: save@bt-laboratory.com | www.bt-laboratory.com