

CRBP II Polyclonal Antibody

Description

Product type	Primary Antibody
Code	BT-AP02204
Host	Rabbit
Isotype	IgG
Size	20ul, 50ul, 100ul
Immunogen	The antiserum was produced against synthesized peptide derived from the Internal region of human RBP2. AA range:71-120
Mol wt	14740
Species reactivity	Human, Mouse, Rat
Clonality	Polyclonal
Recommended application	WB, ELISA
Concentration	1 mg/ml
Full name	CRBP II Antibody
Synonyms	RBP2; CRBP2; Retinol-binding protein 2; Cellular retinol-binding protein II; CRBP-II

This product is for research use only, not for use in human, therapeutic or diagnostic procedure.

Background

RBP2 encodes an abundant protein present in the small intestinal epithelium. It is thought to participate in the uptake and/or intracellular metabolism of vitamin A. Vitamin A is a fat-soluble vitamin necessary for growth, reproduction, differentiation of epithelial tissues, and vision. Retinol-binding protein 2 may also modulate the supply of retinoic acid to the nuclei of endometrial cells during the menstrual cycle.

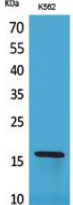
Recommended Dilution

WB: 1: 500 - 1: 2000

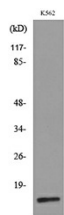
ELISA: 1: 20000

Not yet tested in other applications.

Images



Western Blot analysis of K562 cells using CRBP II Polyclonal Antibody. Secondary antibody was diluted at 1:20000



Western blot analysis of lysate from K562 cells, using RBP2 Antibody.

Storage

-20°C for one year

501 Changsheng S Rd, Nanhu Dist, Jiaxing, Zhejiang, China

Tel: 86 21 31007137 | E-mail: save@bt-laboratory.com | www.bt-laboratory.com