

## CRBP-III Polyclonal Antibody

### Description

<b>Product type</b>	Primary Antibody
<b>Code</b>	BT-AP02205
<b>Host</b>	Rabbit
<b>Isotype</b>	IgG
<b>Size</b>	20ul, 50ul, 100ul
<b>Immunogen</b>	The antiserum was produced against synthesized peptide derived from human CRBP III. AA range:10-59
<b>Mol wt</b>	15931
<b>Species reactivity</b>	Human
<b>Clonality</b>	Polyclonal
<b>Recommended application</b>	IHC-p, IF, ELISA
<b>Concentration</b>	1 mg/ml
<b>Full name</b>	CRBP-III Antibody
<b>Synonyms</b>	RBP5; Retinol-binding protein 5; Cellular retinol-binding protein III; CRBP-III; HRBPiso

**This product is for research use only, not for use in human, therapeutic or diagnostic procedure.**

### Background

The protein encoded by RBP5 (retinol binding protein 5) is a cellular retinol-binding protein expressed highly in kidney and liver. Down-regulation of the encoded protein in hepatocellular carcinoma was associated with large tumor size and poor patient survival rates.

### Recommended Dilution

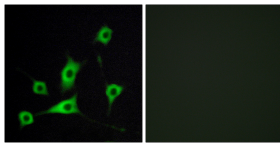
IHC: 1: 100 - 1: 300

IF: 1: 200 - 1: 1000

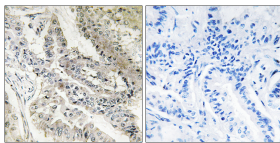
ELISA: 1: 20000

Not yet tested in other applications.

### Images



Immunofluorescence analysis of LOVO cells, using CRBP III Antibody. The picture on the right is blocked with the synthesized peptide.



Immunohistochemistry analysis of paraffin-embedded human lung carcinoma tissue, using CRBP III Antibody. The picture on the right is blocked with the synthesized peptide.

### Storage

-20°C for one year