

Creatine Kinase M Polyclonal Antibody

Description

Product type	Primary Antibody
Code	BT-AP02207
Host	Rabbit
Isotype	IgG
Size	20ul, 50ul, 100ul
Immunogen	The antiserum was produced against synthesized peptide derived from human M-CK. AA range:10-59
Mol wt	43101
Species reactivity	Human, Mouse, Rat
Clonality	Polyclonal
Recommended application	WB, IHC-p, IF, ELISA
Concentration	1 mg/ml
Full name	Creatine Kinase M Antibody
Synonyms	CKM; CKMM; Creatine kinase M-type; Creatine kinase M chain; M-CK

This product is for research use only, not for use in human, therapeutic or diagnostic procedure.

Background

Creatine kinase, M-type encoded by CKM is a cytoplasmic enzyme involved in energy homeostasis and is an important serum marker for myocardial infarction. The encoded protein reversibly catalyzes the transfer of phosphate between ATP and various phosphogens such as creatine phosphate. It acts as a homodimer in striated muscle as well as in other tissues, and as a heterodimer with a similar brain isozyme in heart. The encoded protein is a member of the ATP:guanido phosphotransferase protein family.

Recommended Dilution

WB: 1: 500 - 1: 2000

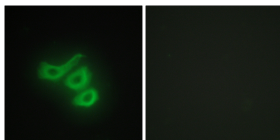
IHC: 1: 100 - 1: 300

IF: 1: 200 - 1: 1000

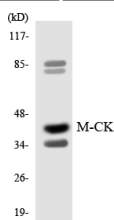
ELISA: 1: 40000

Not yet tested in other applications.

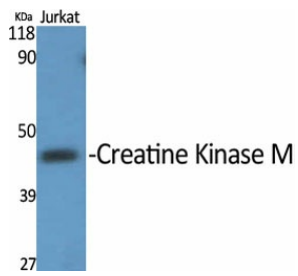
Images



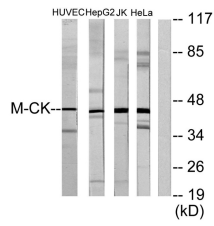
Immunofluorescence analysis of HepG2 cells, using M-CK Antibody. The picture on the right is blocked with the synthesized peptide.



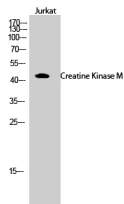
Western blot analysis of the lysates from HepG2 cells using M-CK antibody.



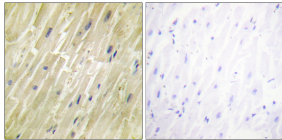
Western Blot analysis of various cells using Creatine Kinase M Polyclonal Antibody



Western blot analysis of lysates from Jurkat, HeLa, HepG2, and HUVEC cells, using M-CK Antibody. The lane on the right is blocked with the synthesized peptide.



Western Blot analysis of Jurkat cells using Creatine Kinase M Polyclonal Antibody



Immunohistochemistry analysis of paraffin-embedded human heart tissue, using M-CK Antibody. The picture on the right is blocked with the synthesized peptide.

Storage

-20°C for one year

501 Changsheng S Rd, Nanhu Dist, Jiaxing, Zhejiang, China

Tel: 86 21 31007137 | E-mail: save@bt-laboratory.com | www.bt-laboratory.com