

## DEN1A Rabbit Polyclonal Antibody

### Description

Product type	Primary Antibody
Code	BT-AP02218
Host	Rabbit
Isotype	IgG
Size	20ul, 50ul, 100ul
Immunogen	Synthesized peptide derived from human DEN1A
Mol wt	110990
Species reactivity	Human, Mouse
Clonality	Polyclonal
Recommended application	WB
Concentration	1 mg/ml
Full name	DEN1A
Synonyms	DEN1A

This product is for research use only, not for use in human, therapeutic or diagnostic procedure.

### Background

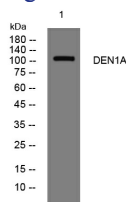
Clathrin (see MIM 118955)-mediated endocytosis is a major mechanism for internalization of proteins and lipids. Members of the connectin family [such as DENND1A] function as guanine nucleotide exchange factors (GEFs) for the early endosomal small GTPase RAB35 (MIM 604199) and bind to clathrin and clathrin adaptor protein-2 (AP2; see MIM 601024). Thus connectins link RAB35 activation with the clathrin machinery (Marat and McPherson| 2010

### Recommended Dilution

WB: 1: 500 - 1: 2000

Not yet tested in other applications.

### Images



Western blot analysis of lysates from 293T cells, primary antibody was diluted at 1:1000, 4°C overnight

### Storage

-20°C for 1 year