

NFATc4(Phospho Ser676) Polyclonal Antibody

Description

Product type	Primary Antibody
Code	BT-AP02222
Host	Rabbit
Isotype	IgG
Size	20ul, 50ul, 100ul
Immunogen	The antiserum was produced against synthesized peptide derived from human NFAT3 around the phosphorylation site of Ser676. AA range:642-691
Mol wt	95473
Species reactivity	Human, Mouse
Clonality	Polyclonal
Recommended application	WB, IHC-p, IF, ELISA
Concentration	1 mg/ml
Full name	Nuclear factor of activated T-cells cytoplasmic 4
Synonyms	Nuclear factor of activated T-cells cytoplasmic 4; NFATC4; NFAT3; Nuclear factor of activated T-cells; cytoplasmic 4; NF-ATc4; NFATc4; T-cell transcription factor NFAT3; NF-AT3

This product is for research use only, not for use in human, therapeutic or diagnostic procedure.

Background

This gene encodes a member of the nuclear factor of activated T cells (NFAT) protein family. The encoded protein is part of a DNA-binding transcription complex. This complex consists of at least two components: a preexisting cytosolic component that translocates to the nucleus upon T cell receptor stimulation and an inducible nuclear component. NFAT proteins are activated by the calmodulin-dependent phosphatase| calcineurin. The encoded protein plays a role in the inducible expression of cytokine genes in T cells| especially in the induction of interleukin-2 and interleukin-4. Alternative splicing results in multiple transcript variants.

Recommended Dilution

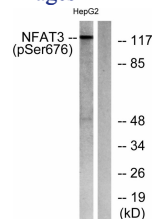
WB: 1: 500 - 1: 2000

IHC-p: 1: 100 - 1: 300

ELISA: 1: 5000

Not yet tested in other applications.

Images



Western blot analysis of lysates from HepG2 cells treated with Ca²⁺ 40uM 30', using NFAT3 (Phospho-Ser676) Antibody. The lane on the right is blocked with the phospho peptide.

Storage

-20°C for 1 year