

CRIF1 Polyclonal Antibody

Description

Product type	Primary Antibody
Code	BT-AP02230
Host	Rabbit
Isotype	IgG
Size	20ul, 50ul, 100ul
Immunogen	The antiserum was produced against synthesized peptide derived from human GADD45GIP1. AA range:91-140
Mol wt	25384
Species reactivity	Human
Clonality	Polyclonal
Recommended application	IHC-p, ELISA
Concentration	1 mg/ml
Full name	CRIF1 Antibody
Synonyms	GADD45GIP1; PLINP1; PRG6; Growth arrest and DNA damage-inducible proteins-interacting protein 1; CKII beta-associating protein; CR6-interacting factor 1; CRIF1; Papillomavirus L2-interacting nuclear p

This product is for research use only, not for use in human, therapeutic or diagnostic procedure.

Background

GADD45GIP1 (GADD45G interacting protein 1) encodes a nuclear-localized protein that may be induced by p53 and regulates the cell cycle by inhibiting G1 to S phase progression. The encoded protein may interact with other cell cycle regulators.

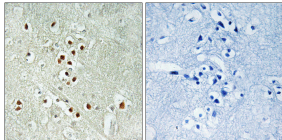
Recommended Dilution

IHC: 1: 100 - 1: 300

ELISA: 1: 40000

Not yet tested in other applications.

Images



Immunohistochemistry analysis of paraffin-embedded human brain, using GADD45GIP1 Antibody. The picture on the right is blocked with the synthesized peptide.

Storage

-20°C for one year

501 Changsheng S Rd, Nanhu Dist, Jiaxing, Zhejiang, China

Tel: 86 21 31007137 | E-mail: save@bt-laboratory.com | www.bt-laboratory.com