

Crk-L Polyclonal Antibody

Description

| | |
|--------------------------------|--|
| Product type | Primary Antibody |
| Code | BT-AP02235 |
| Host | Rabbit |
| Isotype | IgG |
| Size | 20ul, 50ul, 100ul |
| Immunogen | The antiserum was produced against synthesized peptide derived from human CrkL. AA range:173-222 |
| Mol wt | 33777 |
| Species reactivity | Human, Mouse, Rat, Monkey |
| Clonality | Polyclonal |
| Recommended application | WB, IHC-p, IF, ELISA |
| Concentration | 1 mg/ml |
| Full name | Crk-L Antibody |
| Synonyms | CRKL; Crk-like protein |

This product is for research use only, not for use in human, therapeutic or diagnostic procedure.

Background

CRKL encodes a protein kinase containing SH2 and SH3 (src homology) domains which has been shown to activate the RAS and JUN kinase signaling pathways and transform fibroblasts in a RAS-dependent fashion. It is a substrate of the BCR-ABL tyrosine kinase, plays a role in fibroblast transformation by BCR-ABL, and may be oncogenic.

Recommended Dilution

WB: 1: 500 - 1: 2000

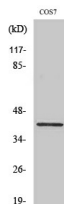
IHC: 1: 100 - 1: 300

IF: 1: 200 - 1: 1000

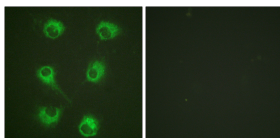
ELISA: 1: 10000

Not yet tested in other applications.

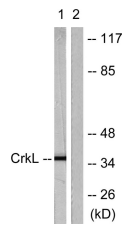
Images



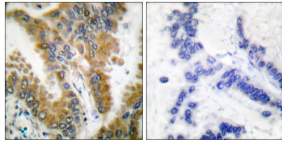
Western Blot analysis of various cells using Crk-L Polyclonal Antibody



Immunofluorescence analysis of HUVEC cells, using CrkL Antibody. The picture on the right is blocked with the synthesized peptide.



Western blot analysis of lysates from 293 cells, using CrkL Antibody. The lane on the right is blocked with the synthesized peptide.



Immunohistochemistry analysis of paraffin-embedded human lung carcinoma tissue, using CrkL Antibody. The picture on the right is blocked with the synthesized peptide.

Storage

-20°C for one year

501 Changsheng S Rd, Nanhu Dist, Jiaxing, Zhejiang, China

Tel: 86 21 31007137 | E-mail: save@bt-laboratory.com | www.bt-laboratory.com