

## CRM1 (Acetyl Lys568) Polyclonal Antibody

### Description

<b>Product type</b>	Primary Antibody
<b>Code</b>	BT-AP02239
<b>Host</b>	Rabbit
<b>Isotype</b>	IgG
<b>Size</b>	20ul, 50ul, 100ul
<b>Immunogen</b>	Synthesized acetyl-peptide derived from the Internal region of human CRM1 around the acetylation site of K568.
<b>Mol wt</b>	123386
<b>Species reactivity</b>	Human, Mouse, Rat
<b>Clonality</b>	Polyclonal
<b>Recommended application</b>	WB, ELISA
<b>Concentration</b>	1 mg/ml
<b>Full name</b>	CRM1 (Acetyl Lys568) Antibody
<b>Synonyms</b>	XPO1; CRM1; Exportin-1; Exp1; Chromosome region maintenance 1 protein homolog

**This product is for research use only, not for use in human, therapeutic or diagnostic procedure.**

### Background

This cell-cycle-regulated gene encodes a protein that mediates leucine-rich nuclear export signal (NES)-dependent protein transport. Exportin 1 specifically inhibits the nuclear export of Rev and U snRNAs. It is involved in the control of several cellular processes by controlling the localization of cyclin B, MPAK, and MAPKAP kinase 2. Exportin 1 also regulates NFAT and AP-1.

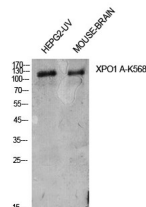
### Recommended Dilution

WB: 1: 500 - 1: 2000

ELISA: 1: 10000

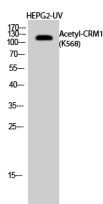
Not yet tested in other applications.

### Images



Western Blot analysis of HepG2-UV, mouse brain cells using Acetyl-CRM1 (K568) Polyclonal Antibody.

Antibody was diluted at 1:500. Secondary antibody was diluted at 1:20000



Western Blot analysis of HEPG2-UV cells using Acetyl-CRM1 (K568) Polyclonal Antibody diluted at 1:500.

Secondary antibody was diluted at 1:20000

## Storage

-20°C for one year

501 Changsheng S Rd, Nanhu Dist, Jiaxing, Zhejiang, China

Tel: 86 21 31007137 | E-mail: [save@bt-laboratory.com](mailto:save@bt-laboratory.com) | [www.bt-laboratory.com](http://www.bt-laboratory.com)