

## CRMP-2 Polyclonal Antibody

### Description

<b>Product type</b>	Primary Antibody
<b>Code</b>	BT-AP02241
<b>Host</b>	Rabbit
<b>Isotype</b>	IgG
<b>Size</b>	20ul, 50ul, 100ul
<b>Immunogen</b>	The antiserum was produced against synthesized peptide derived from human DRP-2. AA range:480-529
<b>Mol wt</b>	62294
<b>Species reactivity</b>	Human, Mouse, Rat
<b>Clonality</b>	Polyclonal
<b>Recommended application</b>	WB, IHC-p, IF, ELISA
<b>Concentration</b>	1 mg/ml
<b>Full name</b>	CRMP-2 Antibody
<b>Synonyms</b>	DPYSL2; CRMP2; ULIP2; Dihydropyrimidinase-related protein 2; DRP-2; Collapsin response mediator protein 2; CRMP-2; N2A3; Unc-33-like phosphoprotein 2; ULIP-2

**This product is for research use only, not for use in human, therapeutic or diagnostic procedure.**

### Background

DPYSL2 encodes a member of the collapsin response mediator protein family. Collapsin response mediator proteins form homo- and hetero-tetramers and facilitate neuron guidance, growth and polarity. The encoded protein promotes microtubule assembly and is required for Sema3A-mediated growth cone collapse, and also plays a role in synaptic signaling through interactions with calcium channels. DPYSL4 has been implicated in multiple neurological disorders, and hyperphosphorylation of the encoded protein may play a key role in the development of Alzheimer's disease. Alternatively spliced transcript variants encoding multiple isoforms have been observed for this gene.

### Recommended Dilution

WB: 1: 500 - 1: 2000

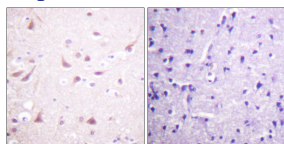
IHC: 1: 100 - 1: 300

IF: 1: 200 - 1: 1000

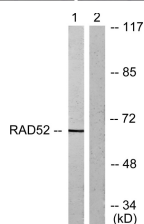
ELISA: 1: 20000

Not yet tested in other applications.

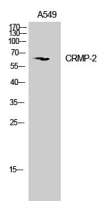
### Images



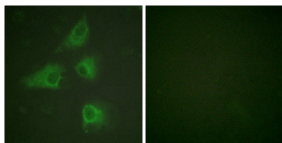
Immunohistochemistry analysis of paraffin-embedded human brain tissue, using DRP-2 Antibody. The picture on the right is blocked with the synthesized peptide.



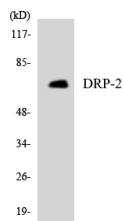
Western blot analysis of lysates from A549 cells, treated with EGF 200ng/ml 30', using DRP-2 Antibody. The lane on the right is blocked with the synthesized peptide.



Western Blot analysis of mouse brain cells using CRMP-2 Polyclonal Antibody



Immunofluorescence analysis of HeLa cells, using DRP-2 Antibody. The picture on the right is blocked with the synthesized peptide.



Western blot analysis of the lysates from HepG2 cells using DRP-2 antibody.

### Storage

-20°C for one year

501 Changsheng S Rd, Nanhu Dist, Jiaxing, Zhejiang, China

Tel: 86 21 31007137 | E-mail: [save@bt-laboratory.com](mailto:save@bt-laboratory.com) | [www.bt-laboratory.com](http://www.bt-laboratory.com)