

CRMP-2 Polyclonal Antibody

Description

Product type	Primary Antibody
Code	BT-AP02242
Host	Rabbit
Isotype	IgG
Size	20ul, 50ul, 100ul
Immunogen	The antiserum was produced against synthesized peptide derived from human CRMP-2. AA range:475-524
Mol wt	62294
Species reactivity	Human, Mouse, Rat
Clonality	Polyclonal
Recommended application	WB, IHC-p, ELISA
Concentration	1 mg/ml
Full name	CRMP-2 Antibody
Synonyms	DPYSL2; CRMP2; ULIP2; Dihydropyrimidinase-related protein 2; DRP-2; Collapsin response mediator protein 2; CRMP-2; N2A3; Unc-33-like phosphoprotein 2; ULIP-2

This product is for research use only, not for use in human, therapeutic or diagnostic procedure.

Background

DPYSL2 encodes a member of the collapsin response mediator protein family. Collapsin response mediator proteins form homo- and heterotetramers and facilitate neuron guidance, growth and polarity. The encoded protein promotes microtubule assembly and is required for Sema3A-mediated growth cone collapse, and also plays a role in synaptic signaling through interactions with calcium channels. DPYSL4 has been implicated in multiple neurological disorders, and hyperphosphorylation of the encoded protein may play a key role in the development of Alzheimer's disease. Alternatively spliced transcript variants encoding multiple isoforms have been observed for this gene.

Recommended Dilution

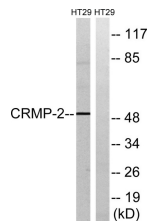
WB: 1: 500 - 1: 2000

IHC: 1: 100 - 1: 300

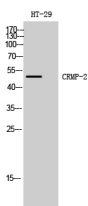
ELISA: 1: 20000

Not yet tested in other applications.

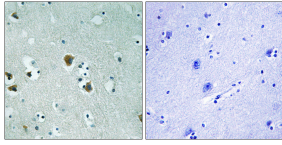
Images



Western blot analysis of lysates from HT-29 cells, treated with heat shock, using CRMP-2 Antibody. The lane on the right is blocked with the synthesized peptide.



Western Blot analysis of HT-29 cells using CRMP-2 Polyclonal Antibody diluted at 1:2000



Immunohistochemistry analysis of paraffin-embedded human brain tissue, using CRMP-2 Antibody.
The picture on the right is blocked with the synthesized peptide.

Storage

-20°C for one year

501 Changsheng S Rd, Nanhu Dist, Jiaxing, Zhejiang, China

Tel: 86 21 31007137 | E-mail: save@bt-laboratory.com | www.bt-laboratory.com