

## CRMP-3 Polyclonal Antibody

### Description

<b>Product type</b>	Primary Antibody
<b>Code</b>	BT-AP02243
<b>Host</b>	Rabbit
<b>Isotype</b>	IgG
<b>Size</b>	20ul, 50ul, 100ul
<b>Immunogen</b>	The antiserum was produced against synthesized peptide derived from human DPYSL4. AA range:91-140
<b>Mol wt</b>	61878
<b>Species reactivity</b>	Human, Mouse, Rat
<b>Clonality</b>	Polyclonal
<b>Recommended application</b>	WB, ELISA
<b>Concentration</b>	1 mg/ml
<b>Full name</b>	CRMP-3 Antibody
<b>Synonyms</b>	DPYSL4; CRMP3; ULIP4; Dihydropyrimidinase-related protein 4; DRP-4; Collapsin response mediator protein 3; CRMP-3; UNC33-like phosphoprotein 4; ULIP-4

This product is for research use only, not for use in human, therapeutic or diagnostic procedure.

### Background

Necessary for signaling by class 3 semaphorins and subsequent remodeling of the cytoskeleton. Plays a role in axon guidance, neuronal growth cone collapse and cell migration.

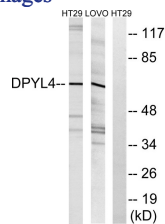
### Recommended Dilution

WB: 1: 500 - 1: 2000

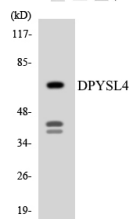
ELISA: 1: 10000

Not yet tested in other applications.

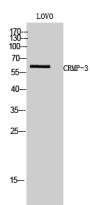
### Images



Western blot analysis of lysates from LOVO and HT-29 cells, using DPYSL4 Antibody. The lane on the right is blocked with the synthesized peptide.



Western blot analysis of the lysates from RAW264.7 cells using DPYSL4 antibody.



Western Blot analysis of LOVO cells using CRMP-3 Polyclonal Antibody

## Storage

-20°C for one year

501 Changsheng S Rd, Nanhu Dist, Jiaxing, Zhejiang, China

Tel: 86 21 31007137 | E-mail: [save@bt-laboratory.com](mailto:save@bt-laboratory.com) | [www.bt-laboratory.com](http://www.bt-laboratory.com)