

DIP2C Rabbit Polyclonal Antibody

Description

| | |
|-------------------------|--|
| Product type | Primary Antibody |
| Code | BT-AP02254 |
| Host | Rabbit |
| Isotype | IgG |
| Size | 20ul, 50ul, 100ul |
| Immunogen | Synthesized peptide derived from human DIP2C |
| Mol wt | 171160 |
| Species reactivity | Human, Rat, Mouse |
| Clonality | Polyclonal |
| Recommended application | WB |
| Concentration | 1 mg/ml |
| Full name | DIP2C |
| Synonyms | DIP2C |

This product is for research use only, not for use in human, therapeutic or diagnostic procedure.

Background

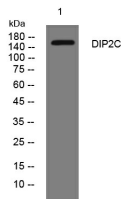
This gene encodes a member of the disco-interacting protein homolog 2 family. The protein shares strong similarity with a Drosophila protein which interacts with the transcription factor disco and is expressed in the nervous system.

Recommended Dilution

WB: 1: 500 - 1: 2000

Not yet tested in other applications.

Images



Western blot analysis of lysates from HpeG2 cells, primary antibody was diluted at 1:1000, 4°C overnight

Storage

-20°C for 1 year

501 Changsheng S Rd, Nanhu Dist, Jiaxing, Zhejiang, China

Tel: 86 21 31007137 | E-mail: save@bt-laboratory.com | www.bt-laboratory.com