

CSGlcA-T Polyclonal Antibody

Description

Product type	Primary Antibody
Code	BT-AP02265
Host	Rabbit
Isotype	IgG
Size	20ul, 50ul, 100ul
Immunogen	The antiserum was produced against synthesized peptide derived from human CSGLCAT. AA range:31-80
Mol wt	85948
Species reactivity	Human
Clonality	Polyclonal
Recommended application	WB, IHC-p, ELISA
Concentration	1 mg/ml
Full name	CSGlcA-T Antibody
Synonyms	CHPF2; CHSY3; CSGLCAT; KIAA1402; Chondroitin sulfate glucuronyltransferase; CSGlcA-T; Chondroitin glucuronyltransferase; Chondroitin polymerizing factor 2; ChPF-2; Chondroitin synthase 3; ChSy-3; N-ac

This product is for research use only, not for use in human, therapeutic or diagnostic procedure.

Background

CHPF2 (Chondroitin Polymerizing Factor 2) is a Protein Coding gene. Among its related pathways are Defective B3GAT3 causes JDSSDHD and Metabolism. GO annotations related to this gene include transferase activity, transferring glycosyl groups and N-acetylgalactosaminyl-proteoglycan 3-beta-glucuronosyltransferase activity. An important paralog of this gene is B4GALNT4.

Recommended Dilution

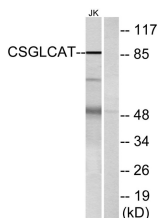
WB: 1: 500 - 1: 2000

IHC: 1: 100 - 1: 300

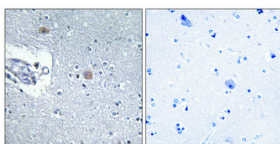
ELISA: 1: 40000

Not yet tested in other applications.

Images



Western blot analysis of lysates from Jurkat cells, using CSGLCAT Antibody. The lane on the right is blocked with the synthesized peptide.



Immunohistochemical analysis of paraffin-embedded Human brain. Antibody was diluted at 1:100(4° overnight). High-pressure and temperature Tris-EDTA,pH8.0 was used for antigen retrieval. Negative contrl (right) obtained from antibody was pre-absorbed by immunogen peptide.

Storage

-20°C for one year

501 Changsheng S Rd, Nanhu Dist, Jiaxing, Zhejiang, China

Tel: 86 21 31007137 | E-mail: save@bt-laboratory.com | www.bt-laboratory.com