

Csk Polyclonal Antibody

Description

Product type	Primary Antibody
Code	BT-AP02267
Host	Rabbit
Isotype	IgG
Size	20ul, 50ul, 100ul
Immunogen	The antiserum was produced against synthesized peptide derived from human CSK. AA range:31-80
Mol wt	50704
Species reactivity	Human, Mouse, Rat
Clonality	Polyclonal
Recommended application	WB, IF, ELISA
Concentration	1 mg/ml
Full name	Csk Antibody
Synonyms	CSK; Tyrosine-protein kinase CSK; C-Src kinase; Protein-tyrosine kinase CYL

This product is for research use only, not for use in human, therapeutic or diagnostic procedure.

Background

Specifically phosphorylates 'Tyr-505' on LCK, which acts as a negative regulatory site. Can also act on the LYN and FYN kinases.

Recommended Dilution

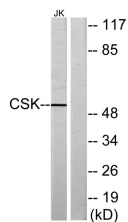
WB: 1: 500 - 1: 2000

IF: 1: 200 - 1: 1000

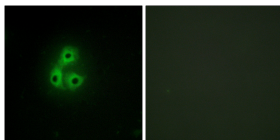
ELISA: 1: 5000

Not yet tested in other applications.

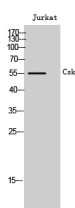
Images



Western blot analysis of lysates from Jurkat cells, using CSK Antibody. The lane on the right is blocked with the synthesized peptide.



Immunofluorescence analysis of A549 cells, using CSK Antibody. The picture on the right is blocked with the synthesized peptide.



Western Blot analysis of Jurkat cells using Csk Polyclonal Antibody

Storage

-20°C for one year

501 Changsheng S Rd, Nanhu Dist, Jiaxing, Zhejiang, China

Tel: 86 21 31007137 | E-mail: save@bt-laboratory.com | www.bt-laboratory.com