

Csk Polyclonal Antibody

Description

Product type	Primary Antibody
Code	BT-AP02268
Host	Rabbit
Isotype	IgG
Size	20ul, 50ul, 100ul
Immunogen	The antiserum was produced against synthesized peptide derived from human CSK. AA range:330-379
Mol wt	50704
Species reactivity	Human, Mouse, Rat
Clonality	Polyclonal
Recommended application	WB, IHC-p, ELISA
Concentration	1 mg/ml
Full name	Csk Antibody
Synonyms	CSK; Tyrosine-protein kinase CSK; C-Src kinase; Protein-tyrosine kinase CYL

This product is for research use only, not for use in human, therapeutic or diagnostic procedure.

Background

All members of the Src gene family of tyrosine kinases are characterized by a carboxy terminal domain tyrosine which is highly phosphorylated in the inactive form of the enzyme and phosphorylated to a much lesser extent when the enzyme is active. In the case of Src p60, Y527 is this tyrosine; however, a mutant form of c-Src in which Y527 is replaced by phenylalanine is transforming and displays 5- to 10-fold elevated kinase activity compared to its normal counterpart. Csk has been identified as a Src-related tyrosine kinase having both SH2 and SH3 domains and a catalytic domain but lacking sequences amino terminal to the SH3 domain as well as carboxy terminal regulatory sequences. Csk phosphorylates Src on Y527 and also downregulates Lyn, Fyn and Lck by tyrosine phosphorylation of carboxy terminal regulatory sites.

Recommended Dilution

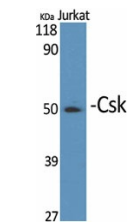
WB: 1: 500 - 1: 2000

IHC: 1: 100 - 1: 300

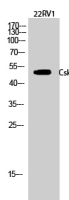
ELISA: 1: 20000

Not yet tested in other applications.

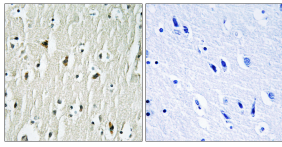
Images



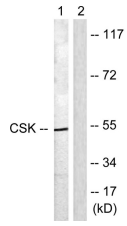
Western Blot analysis of various cells using Csk Polyclonal Antibody diluted at 1:1000



Western Blot analysis of 22RV1 cells using Csk Polyclonal Antibody diluted at 1:1000



Immunohistochemistry analysis of paraffin-embedded human brain tissue, using CSK Antibody. The picture on the right is blocked with the synthesized peptide.



Western blot analysis of lysates from Raw264.7 cells, treated with UV 5', using CSK Antibody. The lane on the right is blocked with the synthesized peptide.

Storage

-20°C for one year

501 Changsheng S Rd, Nanhu Dist, Jiaxing, Zhejiang, China

Tel: 86 21 31007137 | E-mail: save@bt-laboratory.com | www.bt-laboratory.com