

CSN1 Polyclonal Antibody

Description

Product type	Primary Antibody
Code	BT-AP02271
Host	Rabbit
Isotype	IgG
Size	20ul, 50ul, 100ul
Immunogen	The antiserum was produced against synthesized peptide derived from human COPS1. AA range:420-469
Mol wt	53372
Species reactivity	Human, Mouse, Rat
Clonality	Polyclonal
Recommended application	IHC-p, ELISA
Concentration	1 mg/ml
Full name	CSN1 Antibody
Synonyms	GPS1; COPS1; CSN1; COP9 signalosome complex subunit 1; SGN1; Signalosome subunit 1; G protein pathway suppressor 1; GPS-1; JAB1-containing signalosome subunit 1; Protein MFH

This product is for research use only, not for use in human, therapeutic or diagnostic procedure.

Background

GPS1 is known to suppress G-protein and mitogen-activated signal transduction in mammalian cells. The G protein pathway suppressor 1 shares significant similarity with Arabidopsis FUS6, which is a regulator of light-mediated signal transduction in plant cells.

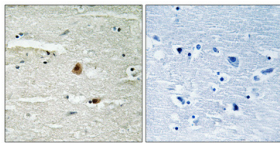
Recommended Dilution

IHC: 1: 100 - 1: 300

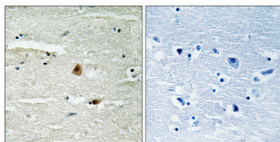
ELISA: 1: 20000

Not yet tested in other applications.

Images



Immunohistochemical analysis of paraffin-embedded Human brain. Antibody was diluted at 1:100(4° overnight). High-pressure and temperature Tris-EDTA,pH8.0 was used for antigen retrieval. Negative contrl (right) obtained from antibody was pre-absorbed by immunogen peptide.



Immunohistochemical analysis of paraffin-embedded Human brain. Antibody was diluted at 1:100(4° overnight). High-pressure and temperature Tris-EDTA,pH8.0 was used for antigen retrieval. Negative contrl (right) obtained from antibody was pre-absorbed by immunogen peptide.

Storage

-20°C for one year