

CSN3 Polyclonal Antibody

Description

Product type	Primary Antibody
Code	BT-AP02272
Host	Rabbit
Isotype	IgG
Size	20ul, 50ul, 100ul
Immunogen	The antiserum was produced against synthesized peptide derived from human JAB1. AA range:374-423
Mol wt	47873
Species reactivity	Human, Mouse, Rat
Clonality	Polyclonal
Recommended application	WB, IHC-p, IF, ELISA
Concentration	1 mg/ml
Full name	CSN3 Antibody
Synonyms	COPS3; CSN3; COP9 signalosome complex subunit 3; SGN3; Signalosome subunit 3; JAB1-containing signalosome subunit 3

This product is for research use only, not for use in human, therapeutic or diagnostic procedure.

Background

COP9 signalosome subunit 3 encoded by COPS3 possesses kinase activity that phosphorylates regulators involved in signal transduction. It phosphorylates I kappa-Balpa, p105, and c-Jun. It acts as a docking site for complex-mediated phosphorylation. The gene is located within the Smith-Magenis syndrome region on chromosome 17. Several transcript variants encoding different isoforms have been found for COPS3.

Recommended Dilution

WB: 1: 500 - 1: 2000

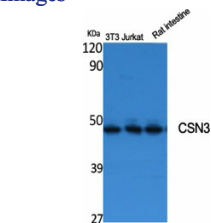
IHC: 1: 100 - 1: 300

IF: 1: 200 - 1: 1000

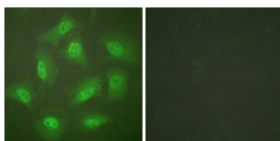
ELISA: 1: 10000

Not yet tested in other applications.

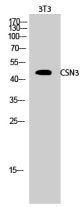
Images



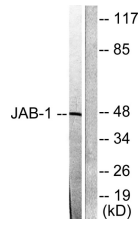
Western Blot analysis of various cells using CSN3 Polyclonal Antibody



Immunofluorescence analysis of HeLa cells, using JAB1 Antibody. The picture on the right is blocked with the synthesized peptide.



Western Blot analysis of 3T3 cells using CSN3 Polyclonal Antibody



Western blot analysis of lysates from LOVO cells, using JAB1 Antibody. The lane on the right is blocked with the synthesized peptide.

Storage

-20°C for one year

501 Changsheng S Rd, Nanhu Dist, Jiaxing, Zhejiang, China

Tel: 86 21 31007137 | E-mail: save@bt-laboratory.com | www.bt-laboratory.com