

DMRT2 Rabbit Polyclonal Antibody

Description

Product type	Primary Antibody
Code	BT-AP02273
Host	Rabbit
Isotype	IgG
Size	20ul, 50ul, 100ul
Immunogen	Synthesized peptide derived from human DMRT2
Mol wt	N/A
Species reactivity	Human, Rat, Mouse
Clonality	Polyclonal
Recommended application	WB
Concentration	1 mg/ml
Full name	DMRT2
Synonyms	DMRT2; Doublesex- and mab-3-related transcription factor 2; Doublesex-like 2 protein; DSXL-2)

This product is for research use only, not for use in human, therapeutic or diagnostic procedure.

Background

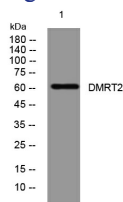
The protein encoded by this gene belongs to the DMRT gene family| sharing a DM DNA-binding domain with Drosophila 'doublesex' (dsx) and C. elegans mab3| genes involved in sex determination in these organisms. Also| this gene is located in a region of the human genome (chromosome 9p24.3) associated with gonadal dysgenesis and XY sex reversal. Hence this gene is one of the candidates for sex-determining gene(s) on chr 9.

Recommended Dilution

WB: 1: 500 - 1: 2000

Not yet tested in other applications.

Images



Western blot analysis of lysates from A431 cells, primary antibody was diluted at 1:1000, 4°C overnight

Storage

-20°C for 1 year