

c-Src Polyclonal Antibody

Description

Product type	Primary Antibody
Code	BT-AP02280
Host	Rabbit
Isotype	IgG
Size	20ul, 50ul, 100ul
Immunogen	The antiserum was produced against synthesized peptide derived from human Src. AA range:181-230
Mol wt	59704
Species reactivity	Human, Mouse, Rat
Clonality	Polyclonal
Recommended application	WB, ELISA
Concentration	1 mg/ml
Full name	c-Src Antibody
Synonyms	SRC; SRC1; Proto-oncogene tyrosine-protein kinase Src; Proto-oncogene c-Src; pp60c-src; p60-Src

This product is for research use only, not for use in human, therapeutic or diagnostic procedure.

Background

SRC is highly similar to the v-src gene of Rous sarcoma virus. This proto-oncogene may play a role in the regulation of embryonic development and cell growth. SRC proto-oncogene, non-receptor tyrosine kinase encoded by SRC is a tyrosine-protein kinase whose activity can be inhibited by phosphorylation by c-SRC kinase. Mutations in SRC could be involved in the malignant progression of colon cancer. Two transcript variants encoding the same protein have been found for SRC.

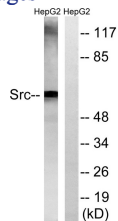
Recommended Dilution

WB: 1: 500 - 1: 2000

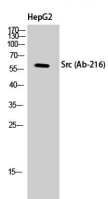
ELISA: 1: 5000

Not yet tested in other applications.

Images



Western blot analysis of lysates from HepG2 cells, using Src Antibody. The lane on the right is blocked with the synthesized peptide.



Western Blot analysis of HepG2 cells using c-Src Polyclonal Antibody diluted at 1:500

Storage

-20°C for one year

501 Changsheng S Rd, Nanhu Dist, Jiaxing, Zhejiang, China

Tel: 86 21 31007137 | E-mail: save@bt-laboratory.com | www.bt-laboratory.com