

CSRNP2 Polyclonal Antibody

Description

Product type	Primary Antibody
Code	BT-AP02282
Host	Rabbit
Isotype	IgG
Size	20ul, 50ul, 100ul
Immunogen	The antiserum was produced against synthesized peptide derived from human TAIP-12. AA range:91-140
Mol wt	59591
Species reactivity	Human, Mouse, Rat
Clonality	Polyclonal
Recommended application	WB, IHC-p, ELISA
Concentration	1 mg/ml
Full name	CSRNP2 Antibody
Synonyms	CSRNP2; C12orf22; FAM130A1; TAIP12; Cysteine/serine-rich nuclear protein 2; CSRNP-2; Protein FAM130A1; TGF-beta-induced apoptosis protein 12; TAIP-12

This product is for research use only, not for use in human, therapeutic or diagnostic procedure.

Background

Cysteine and serine rich nuclear protein 2 encoded by CSRNP2 belongs to the CSRNP family of nuclear proteins that share conserved regions, including cysteine- and serine- rich regions, a basic domain, a transcriptional activation domain, and bind the sequence 'AGAGTG', thus have the hallmark of transcription factors. Studies in mice suggest that these genes may have redundant functions. Alternatively spliced transcript variants have been found for CSRNP2.

Recommended Dilution

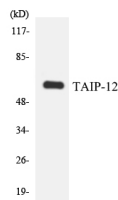
WB: 1: 500 - 1: 2000

IHC: 1: 100 - 1: 300

ELISA: 1: 20000

Not yet tested in other applications.

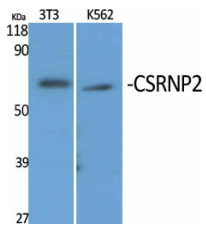
Images



Western blot analysis of the lysates from 293 cells using TAIP-12 antibody.



Western Blot analysis of A549 cells using CSRNP2 Polyclonal Antibody cells nucleus.



Western Blot analysis of various cells using CSRNP2 Polyclonal Antibody cells nucleus.

Storage

-20°C for one year

501 Changsheng S Rd, Nanhu Dist, Jiaxing, Zhejiang, China

Tel: 86 21 31007137 | E-mail: save@bt-laboratory.com | www.bt-laboratory.com