

CstF-64 Polyclonal Antibody

Description

Product type	Primary Antibody
Code	BT-AP02287
Host	Rabbit
Isotype	IgG
Size	20ul, 50ul, 100ul
Immunogen	The antiserum was produced against synthesized peptide derived from human CSTF2. AA range:11-60
Mol wt	60959
Species reactivity	Human, Mouse
Clonality	Polyclonal
Recommended application	WB, IHC-p, IF, ELISA
Concentration	1 mg/ml
Full name	CstF-64 Antibody
Synonyms	CSTF2; Cleavage stimulation factor subunit 2; CF-1 64 kDa subunit; Cleavage stimulation factor 64 kDa subunit; CSTF 64 kDa subunit; CstF-64

This product is for research use only, not for use in human, therapeutic or diagnostic procedure.

Background

CSTF2 encodes a nuclear protein with an RRM (RNA recognition motif) domain. Cleavage stimulation factor subunit 2 is a member of the cleavage stimulation factor (CSTF) complex that is involved in the 3' end cleavage and polyadenylation of pre-mRNAs. Specifically, this protein binds GU-rich elements within the 3'-untranslated region of mRNAs.

Recommended Dilution

WB: 1: 500 - 1: 2000

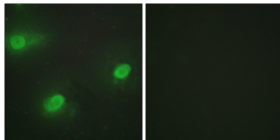
IHC: 1: 100 - 1: 300

IF: 1: 200 - 1: 1000

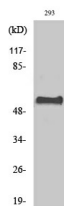
ELISA: 1: 5000

Not yet tested in other applications.

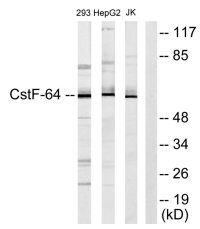
Images



Immunofluorescence analysis of HeLa cells, using CSTF2 Antibody. The picture on the right is blocked with the synthesized peptide.



Western Blot analysis of various cells using CstF-64 Polyclonal Antibody diluted at 1:1000 cells nucleus.



Western blot analysis of lysates from 293, K562, and Jurkat cells, using CSTF2 Antibody. The lane on the right is blocked with the synthesized peptide.

Storage

-20°C for one year

501 Changsheng S Rd, Nanhu Dist, Jiaxing, Zhejiang, China

Tel: 86 21 31007137 | E-mail: save@bt-laboratory.com | www.bt-laboratory.com