

C-TAK1 Polyclonal Antibody

Description

Product type	Primary Antibody
Code	BT-AP02292
Host	Rabbit
Isotype	IgG
Size	20ul, 50ul, 100ul
Immunogen	The antiserum was produced against synthesized peptide derived from human MARK3. AA range: 1-50
Mol wt	86944
Species reactivity	Human, Mouse, Rat
Clonality	Polyclonal
Recommended application	WB, IHC-p, IF, ELISA
Concentration	1 mg/ml
Full name	C-TAK1 Antibody
Synonyms	MARK3; CTAK1; EMK2; MAP/microtubule affinity-regulating kinase 3; C-TAK1; cTAK1; Cdc25C-associated protein kinase 1; ELKL motif kinase 2; EMK-2; Protein kinase STK10; Ser/Thr protein kinase PAR-1; Par

This product is for research use only, not for use in human, therapeutic or diagnostic procedure.

Background

Microtubule affinity regulating kinase 3 encoded by MARK3 is activated by phosphorylation and in turn is involved in the phosphorylation of tau proteins MAP2 and MAP4. Several transcript variants encoding different isoforms have been found for MARK3.

Recommended Dilution

WB: 1: 500 - 1: 2000

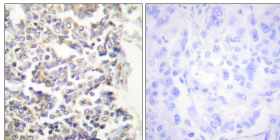
IHC: 1: 100 - 1: 300

IF: 1: 200 - 1: 1000

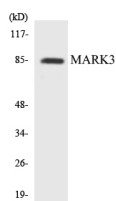
ELISA: 1: 40000

Not yet tested in other applications.

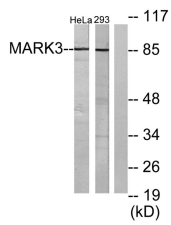
Images



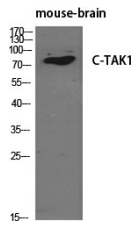
Immunohistochemistry analysis of paraffin-embedded human lung carcinoma tissue, using MARK3 Antibody. The picture on the right is blocked with the synthesized peptide.



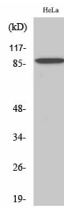
Western blot analysis of the lysates from K562 cells using MARK3 antibody.



Western blot analysis of lysates from HeLa and 293 cells, using MARK3 Antibody. The lane on the right is blocked with the synthesized peptide.



Western Blot analysis of various cells using C-TAK1 Polyclonal Antibody diluted at 1:500



Western Blot analysis of 293 cells using C-TAK1 Polyclonal Antibody diluted at 1:500

Storage

-20°C for one year

501 Changsheng S Rd, Nanhu Dist, Jiaxing, Zhejiang, China

Tel: 86 21 31007137 | E-mail: save@bt-laboratory.com | www.bt-laboratory.com