

CtBP2 Polyclonal Antibody

Description

Product type	Primary Antibody
Code	BT-AP02295
Host	Rabbit
Isotype	IgG
Size	20ul, 50ul, 100ul
Immunogen	The antiserum was produced against synthesized peptide derived from human CtBP2. AA range:396-445
Mol wt	48945
Species reactivity	Human, Mouse, Rat
Clonality	Polyclonal
Recommended application	WB, IHC-p, IF, ELISA
Concentration	1 mg/ml
Full name	CtBP2 Antibody
Synonyms	CTBP2; C-terminal-binding protein 2; CtBP2

This product is for research use only, not for use in human, therapeutic or diagnostic procedure.

Background

CtBP2 produces alternative transcripts encoding two distinct proteins. One protein is a transcriptional repressor, while the other isoform is a major component of specialized synapses known as synaptic ribbons. Both proteins contain a NAD⁺ binding domain similar to NAD⁺-dependent 2-hydroxyacid dehydrogenases. A portion of the 3' untranslated region was used to map this gene to chromosome 21q21. ; however, it was noted that similar loci elsewhere in the genome are likely. Blast analysis shows that this gene is present on chromosome 10. Several transcript variants encoding two different isoforms have been found for this gene.

Recommended Dilution

WB: 1: 500 - 1: 2000

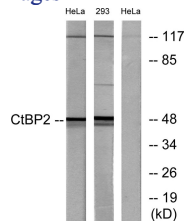
IHC: 1: 100 - 1: 300

IF: 1: 200 - 1: 1000

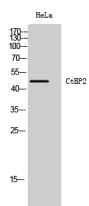
ELISA: 1: 5000

Not yet tested in other applications.

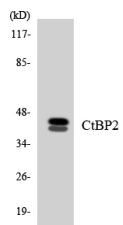
Images



Western blot analysis of lysates from HeLa and 293 cells, using CtBP2 Antibody. The lane on the right is blocked with the synthesized peptide.



Western Blot analysis of HeLa cells using CtBP2 Polyclonal Antibody cells nucleus.



Western blot analysis of the lysates from HUVEC cells using CtBP2 antibody.

Storage

-20°C for one year

501 Changsheng S Rd, Nanhu Dist, Jiaxing, Zhejiang, China

Tel: 86 21 31007137 | E-mail: save@bt-laboratory.com | www.bt-laboratory.com