

CTDSP1 Polyclonal Antibody

Description

Product type	Primary Antibody
Code	BT-AP02296
Host	Rabbit
Isotype	IgG
Size	20ul, 50ul, 100ul
Immunogen	The antiserum was produced against synthesized peptide derived from human CTDSP1. AA range:1-50
Mol wt	29203
Species reactivity	Human, Mouse, Rat
Clonality	Polyclonal
Recommended application	WB, IHC-p, ELISA
Concentration	1 mg/ml
Full name	CTDSP1 Antibody
Synonyms	CTDSP1; NIF3; NLIIF; SCP1; Carboxy-terminal domain RNA polymerase II polypeptide A small phosphatase 1; Nuclear LIM interactor-interacting factor 3; NLI-IF; NLI-interacting factor 3; Small C-terminal

This product is for research use only, not for use in human, therapeutic or diagnostic procedure.

Background

CTDSP1 encodes a member of the small C-terminal domain phosphatase (SCP) family of nuclear phosphatases. These proteins play a role in transcriptional regulation through specific dephosphorylation of phosphoserine 5 within tandem heptapeptide repeats of the C-terminal domain of RNA polymerase II. The encoded protein (CTD small phosphatase 1) plays a role in neuronal gene silencing in non-neuronal cells, and may also inhibit osteoblast differentiation. Alternatively spliced transcript variants encoding multiple isoforms have been observed for CTDSP1.

Recommended Dilution

WB: 1: 500 - 1: 2000

IHC: 1: 100 - 1: 300

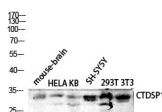
ELISA: 1: 40000

Not yet tested in other applications.

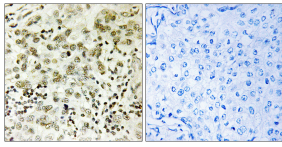
Images



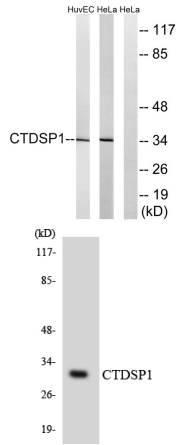
Western Blot analysis of various cells using CTDSP1 Polyclonal Antibody diluted at 1:1000 cells nucleus.



Western blot analysis of mouse-brain HELA KB SH-SY5Y 293T 3T3 lysis using CTDSP1 antibody. Antibody was diluted at 1:1000 cells nucleus.



Immunohistochemistry analysis of paraffin-embedded human breast carcinoma tissue, using CTDSP1 Antibody. The picture on the right is blocked with the synthesized peptide.



Western blot analysis of lysates from HeLa and HUVEC cells, using CTDSP1 Antibody. The lane on the right is blocked with the synthesized peptide.

Western blot analysis of the lysates from HepG2 cells using CTDSP1 antibody.

Storage

-20°C for one year

501 Changsheng S Rd, Nanhu Dist, Jiaxing, Zhejiang, China

Tel: 86 21 31007137 | E-mail: save@bt-laboratory.com | www.bt-laboratory.com