

DRP1(Phospho-Ser616) Rabbit Polyclonal Antibody

Description

Product type	Primary Antibody
Code	BT-AP02311
Host	Rabbit
Isotype	IgG
Size	20ul, 50ul, 100ul
Immunogen	Synthesized phosho peptide around human DRP1 (Ser616)
Mol wt	N/A
Species reactivity	Human, Mouse, Rat
Clonality	Polyclonal
Recommended application	WB
Concentration	1 mg/ml
Full name	DRP1
Synonyms	DRP1 (Ser616) ; Dynamin-1-like protein; EC 3.6.5.5; Dnm1p/Vps1p-like protein; DVLP; Dynamin family member proline-rich carboxyl-terminal domain less; Dymple; Dynamin-like protein; Dynamin-like protein 4; Dynamin-like protein IV; HdynIV; Dynamin-related protein 1)

This product is for research use only, not for use in human, therapeutic or diagnostic procedure.

Background

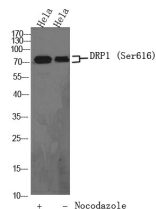
This gene encodes a member of the dynamin superfamily of GTPases. The encoded protein mediates mitochondrial and peroxisomal division and is involved in developmentally regulated apoptosis and programmed necrosis. Dysfunction of this gene is implicated in several neurological disorders including Alzheimer's disease. Mutations in this gene are associated with the autosomal dominant disorder encephalopathy lethal due to defective mitochondrial and peroxisomal fission (EMPF). Alternative splicing results in multiple transcript variants encoding different isoforms.

Recommended Dilution

WB: 1: 1000 - 1: 2000

Not yet tested in other applications.

Images



Western Blot analysis of HeLa cells, HeLa cell treated or untreated by Nocodazole at 100 ng/ml 17h. Primary Antibody was diluted at 1:1000. Secondary antibody was diluted at 1:10000

Storage

-20°C for 1 year