

CUG-BP1 Polyclonal Antibody

Description

Product type	Primary Antibody
Code	BT-AP02313
Host	Rabbit
Isotype	IgG
Size	20ul, 50ul, 100ul
Immunogen	The antiserum was produced against synthesized peptide derived from human CELF-1. AA range:71-120
Mol wt	52063
Species reactivity	Human, Mouse, Rat
Clonality	Polyclonal
Recommended application	WB, IHC-p, ELISA
Concentration	1 mg/ml
Full name	CUG-BP1 Antibody
Synonyms	CELF1; BRUNOL2; CUGBP; CUGBP1; NAB50; CUGBP Elav-like family member 1; CELF-1; 50 kDa nuclear polyadenylated RNA-binding protein; Bruno-like protein 2; CUG triplet repeat RNA-binding protein 1; CUG-BP

This product is for research use only, not for use in human, therapeutic or diagnostic procedure.

Background

Members of the CELF/BRUNOL protein family contain two N-terminal RNA recognition motif (RRM) domains, one C-terminal RRM domain, and a divergent segment of 160-230 aa between the second and third RRM domains. Members of this protein family regulate pre-mRNA alternative splicing and may also be involved in mRNA editing, and translation. This gene may play a role in myotonic dystrophy type 1 (DM1) via interactions with the dystrophin myotonic-protein kinase (DMPK) gene. Alternative splicing results in multiple transcript variants encoding different isoforms.

Recommended Dilution

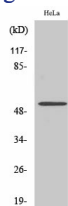
WB: 1: 500 - 1: 2000

IHC: 1: 100 - 1: 300

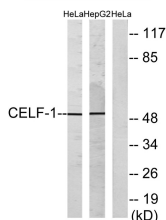
ELISA: 1: 40000

Not yet tested in other applications.

Images



Western Blot analysis of various cells using CUG-BP1 Polyclonal Antibody diluted at 1:500



Western blot analysis of lysates from HeLa and HepG2 cells, using CELF-1 Antibody. The lane on the right is blocked with the synthesized peptide.

Storage

-20°C for one year

501 Changsheng S Rd, Nanhu Dist, Jiaxing, Zhejiang, China

Tel: 86 21 31007137 | E-mail: save@bt-laboratory.com | www.bt-laboratory.com