

DSCR3 Rabbit Polyclonal Antibody

Description

Product type	Primary Antibody
Code	BT-AP02315
Host	Rabbit
Isotype	IgG
Size	20ul, 50ul, 100ul
Immunogen	Synthesized peptide derived from human DSCR3
Mol wt	32670
Species reactivity	Human, Mouse
Clonality	Polyclonal
Recommended application	WB
Concentration	1 mg/ml
Full name	DSCR3
Synonyms	DSCR3

This product is for research use only, not for use in human, therapeutic or diagnostic procedure.

Background

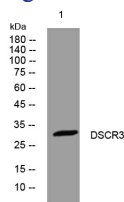
The region of chromosome 21 between genes CBR and ERG (CBR-ERG region) which spans 2.5 Mb on 21q22.2 has been defined by analysis of patients with partial trisomy 21. It contributes significantly to the pathogenesis of many characteristics of Down syndrome including morphological features hypotonia and mental retardation. The DSCR3 (Down syndrome critical region gene 3) gene is found in this region and is predicted to contain eight exons. DSCR3 is expressed in most tissues examined.

Recommended Dilution

WB: 1: 500 - 1: 2000

Not yet tested in other applications.

Images



Western blot analysis of lysates from HeLa cells, primary antibody was diluted at 1:1000, 4°C overnight

Storage

-20°C for 1 year