

CUL-3 Polyclonal Antibody

Description

Product type	Primary Antibody
Code	BT-AP02317
Host	Rabbit
Isotype	IgG
Size	20ul, 50ul, 100ul
Immunogen	The antiserum was produced against synthesized peptide derived from human Cullin 3. AA range:1-50
Mol wt	88930
Species reactivity	Human, Mouse
Clonality	Polyclonal
Recommended application	WB, IHC-p, ELISA
Concentration	1 mg/ml
Full name	CUL-3 Antibody
Synonyms	CUL3; KIAA0617; Cullin-3; CUL-3

This product is for research use only, not for use in human, therapeutic or diagnostic procedure.

Background

CUL3 encodes a member of the cullin protein family. Cullin 3 plays a critical role in the polyubiquitination and subsequent degradation of specific protein substrates as the core component and scaffold protein of an E3 ubiquitin ligase complex. Complexes including the encoded protein may also play a role in late endosome maturation. Mutations in this gene are a cause of type 2E pseudohypoaldosteronism. Alternatively spliced transcript variants encoding multiple isoforms have been observed for CUL3.

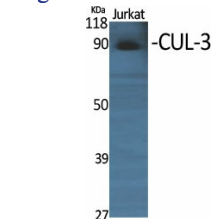
Recommended Dilution

IHC: 1: 100 - 1: 300

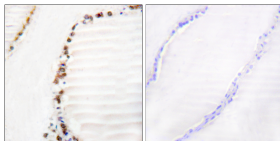
ELISA: 1: 5000

Not yet tested in other applications.

Images



Western Blot analysis of various cells using CUL-3 Polyclonal Antibody diluted at 1:1000



Immunohistochemistry analysis of paraffin-embedded human thyroid gland tissue, using Cullin 3 Antibody. The picture on the right is blocked with the synthesized peptide.

Storage

-20°C for one year