

CUX1 Polyclonal Antibody

Description

Product type	Primary Antibody
Code	BT-AP02323
Host	Rabbit
Isotype	IgG
Size	20ul, 50ul, 100ul
Immunogen	The antiserum was produced against synthesized peptide derived from human CUTL1. AA range:10-59
Mol wt	164273
Species reactivity	Human, Mouse
Clonality	Polyclonal
Recommended application	WB, IHC-p, IF, ELISA
Concentration	1 mg/ml
Full name	CUX1 Antibody
Synonyms	CUX1; CUTL1; Homeobox protein cut-like 1; CCAAT displacement protein; CDP; Homeobox protein cux-1; CUX1; CUTL1; Protein CASP

This product is for research use only, not for use in human, therapeutic or diagnostic procedure.

Background

Cut like homeobox 1 encoded by CUX1 is a member of the homeodomain family of DNA binding proteins. It may regulate gene expression, morphogenesis, and differentiation and it may also play a role in the cell cycle progression. Several alternatively spliced transcript variants encoding different isoforms have been identified.

Recommended Dilution

WB: 1: 500 - 1: 2000

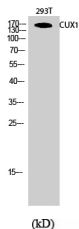
IHC: 1: 100 - 1: 300

IF: 1: 200 - 1: 1000

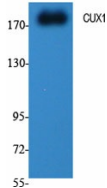
ELISA: 1: 40000

Not yet tested in other applications.

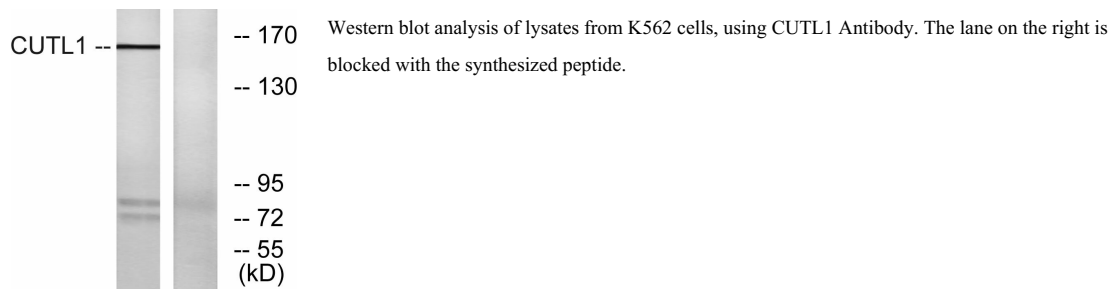
Images



Western Blot analysis of 293T cells using CUX1 Polyclonal Antibody diluted at 1:1000



Western Blot analysis of various cells using CUX1 Polyclonal Antibody diluted at 1:1000



Storage

-20°C for one year

501 Changsheng S Rd, Nanhu Dist, Jiaxing, Zhejiang, China

Tel: 86 21 31007137 | E-mail: save@bt-laboratory.com | www.bt-laboratory.com