

CYB561D1 Polyclonal Antibody

Description

Product type	Primary Antibody
Code	BT-AP02336
Host	Rabbit
Isotype	IgG
Size	20ul, 50ul, 100ul
Immunogen	The antiserum was produced against synthesized peptide derived from human CYB561D1. AA range:180-229
Mol wt	25424
Species reactivity	Human
Clonality	Polyclonal
Recommended application	WB, IF, ELISA
Concentration	1 mg/ml
Full name	CYB561D1 Antibody
Synonyms	CYB561D1; Cytochrome b561 domain-containing protein 1

This product is for research use only, not for use in human, therapeutic or diagnostic procedure.

Background

CYB561D2 (Cytochrome b561 domain-containing protein 2), also known as putative tumor suppressor protein 101F6, is a 222 amino acid highly hydrophobic protein that contains six membrane spanning domains. Localized to endosomes and endoplasmic reticulum of the perinuclear region, CYB561D2 contains 2 heme-binding sites, through which it reduces ferric ions. CYB561D2 is ubiquitously expressed, with highest levels in lung, liver and kidney. Though expression of CYB561D2 is abundant in normal lung bronchial epithelial cells, CYB561D2 is absent in most lung cancers. The gene encoding CYB561D2 maps to human chromosome 3p21.3, a region that is prone to genetic alterations and is associated with frequent and early allele loss in many human cancers. Exogenous expression of CYB561D2 leads to the induction of caspase-independent apoptotic and autophagic pathways, resulting in the synergistic killing of tumor cells. This suggests an important role for CYB561D2 as a therapeutic intervention in cancer treatment.

Recommended Dilution

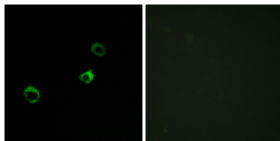
WB: 1: 500 - 1: 2000

IF: 1: 200 - 1: 1000

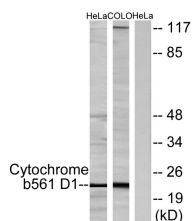
ELISA: 1: 40000

Not yet tested in other applications.

Images



Immunofluorescence analysis of MCF-7 cells, using Cytochrome b561 D1 Antibody. The picture on the right is blocked with the synthesized peptide.



Western blot analysis of lysates from HeLa cells and COLO205 cells, using Cytochrome b561 D1 Antibody. The lane on the right is blocked with the synthesized peptide.

Storage

-20°C for one year

501 Changsheng S Rd, Nanhu Dist, Jiaxing, Zhejiang, China

Tel: 86 21 31007137 | E-mail: save@bt-laboratory.com | www.bt-laboratory.com