

## CYB561D2 Polyclonal Antibody

### Description

Product type	Primary Antibody
Code	BT-AP02337
Host	Rabbit
Isotype	IgG
Size	20ul, 50ul, 100ul
Immunogen	The antiserum was produced against synthesized peptide derived from human C56D2. AA range:55-104
Mol wt	23974
Species reactivity	Human
Clonality	Polyclonal
Recommended application	WB, ELISA
Concentration	1 mg/ml
Full name	CYB561D2 Antibody
Synonyms	CYB561D2; 101F6; LUCA12.2; Cytochrome b561 domain-containing protein 2; Putative tumor suppressor protein 101F6

This product is for research use only, not for use in human, therapeutic or diagnostic procedure.

### Background

CYB561D2 (Cytochrome B561 Family Member D2) is a Protein Coding gene. An important paralog of this gene is CYB561D1.

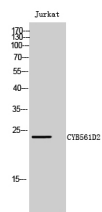
### Recommended Dilution

WB: 1: 500 - 1: 2000

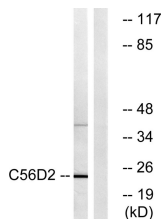
ELISA: 1: 20000

Not yet tested in other applications.

### Images



Western Blot analysis of Jurkat cells using CYB561D2 Polyclonal Antibody



Western blot analysis of lysates from Jurkat cells, using C56D2 Antibody. The lane on the right is blocked with the synthesized peptide.

### Storage

-20°C for one year