

CYB5R1 Polyclonal Antibody

Description

Product type	Primary Antibody
Code	BT-AP02339
Host	Rabbit
Isotype	IgG
Size	20ul, 50ul, 100ul
Immunogen	The antiserum was produced against synthesized peptide derived from human CYB5R1. AA range:9-58
Mol wt	34095
Species reactivity	Human, Mouse, Rat
Clonality	Polyclonal
Recommended application	WB, ELISA
Concentration	1 mg/ml
Full name	CYB5R1 Antibody
Synonyms	CYB5R1; NQO3A2; NADH-cytochrome b5 reductase 1; b5R.1; Humb5R2; NAD(P)H:quinone oxidoreductase type 3 polypeptide A2

This product is for research use only, not for use in human, therapeutic or diagnostic procedure.

Background

CYB5R1 (Cytochrome B5 Reductase 1) is a Protein Coding gene. Among its related pathways are Amino sugar and nucleotide sugar metabolism and PAK Pathway. GO annotations related to this gene include oxidoreductase activity and cytochrome-b5 reductase activity, acting on NADPH. An important paralog of this gene is CYB5R3.

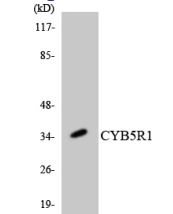
Recommended Dilution

WB: 1: 500 - 1: 2000

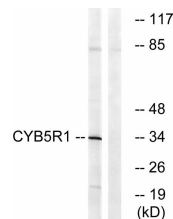
ELISA: 1: 20000

Not yet tested in other applications.

Images



Western blot analysis of the lysates from K562 cells using CYB5R1 antibody.



Western blot analysis of lysates from RAW264.7 cells, using CYB5R1 Antibody. The lane on the right is blocked with the synthesized peptide.

Storage

-20°C for one year

501 Changsheng S Rd, Nanhu Dist, Jiaxing, Zhejiang, China

Tel: 86 21 31007137 | E-mail: save@bt-laboratory.com | www.bt-laboratory.com