

CYB5R3 Polyclonal Antibody

Description

Product type	Primary Antibody
Code	BT-AP02340
Host	Rabbit
Isotype	IgG
Size	20ul, 50ul, 100ul
Immunogen	The antiserum was produced against synthesized peptide derived from human CYB5R3. AA range:137-186
Mol wt	34235
Species reactivity	Human
Clonality	Polyclonal
Recommended application	WB, IHC-p, ELISA
Concentration	1 mg/ml
Full name	CYB5R3 Antibody
Synonyms	CYB5R3; DIA1; NADH-cytochrome b5 reductase 3; B5R; Cytochrome b5 reductase; Diaphorase-1

This product is for research use only, not for use in human, therapeutic or diagnostic procedure.

Background

CYB5R3 encodes cytochrome b5 reductase, which includes a membrane-bound form in somatic cells (anchored in the endoplasmic reticulum, mitochondrial and other membranes) and a soluble form in erythrocytes. The membrane-bound form exists mainly on the cytoplasmic side of the endoplasmic reticulum and functions in desaturation and elongation of fatty acids, in cholesterol biosynthesis, and in drug metabolism. The erythrocyte form is located in a soluble fraction of circulating erythrocytes and is involved in methemoglobin reduction. The membrane-bound form has both membrane-binding and catalytic domains, while the soluble form has only the catalytic domain. Alternate splicing results in multiple transcript variants. Mutations in CYB5R3 cause methemoglobinemias.

Recommended Dilution

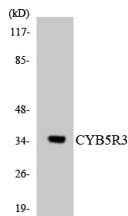
WB: 1: 500 - 1: 2000

IHC: 1: 100 - 1: 300

ELISA: 1: 40000

Not yet tested in other applications.

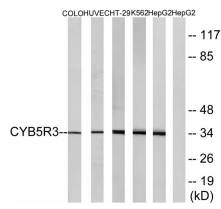
Images



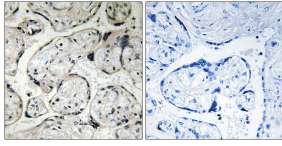
Western blot analysis of the lysates from K562 cells using CYB5R3 antibody.



Western Blot analysis of various cells using CYB5R3 Polyclonal Antibody



Western blot analysis of lysates from HepG2, COLO, HUVEC, HT-29, and K562 cells, using CYB5R3 Antibody. The lane on the right is blocked with the synthesized peptide.



Immunohistochemistry analysis of paraffin-embedded human placenta tissue, using CYB5R3 Antibody. The picture on the right is blocked with the synthesized peptide.

Storage

-20°C for one year

501 Changsheng S Rd, Nanhu Dist, Jiaxing, Zhejiang, China

Tel: 86 21 31007137 | E-mail: save@bt-laboratory.com | www.bt-laboratory.com