

Cyclin B1 Polyclonal Antibody

Description

| | |
|--------------------------------|---|
| Product type | Primary Antibody |
| Code | BT-AP02344 |
| Host | Rabbit |
| Isotype | IgG |
| Size | 20ul, 50ul, 100ul |
| Immunogen | The antiserum was produced against synthesized peptide derived from human Cyclin B1. AA range:121-170 |
| Mol wt | 48337 |
| Species reactivity | Human, Mouse, Rat |
| Clonality | Polyclonal |
| Recommended application | WB, ELISA |
| Concentration | 1 mg/ml |
| Full name | Cyclin B1 Antibody |
| Synonyms | CCNB1; CCNB; G2/mitotic-specific cyclin-B1 |

This product is for research use only, not for use in human, therapeutic or diagnostic procedure.

Background

The protein encoded by CCNB1 (cyclin B1) is a regulatory protein involved in mitosis. The gene product complexes with p34 (cdc2) to form the maturation-promoting factor (MPF). Two alternative transcripts have been found, a constitutively expressed transcript and a cell cycle-regulated transcript, that is expressed predominantly during G2/M phase. The different transcripts result from the use of alternate transcription initiation sites.

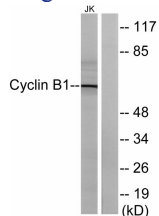
Recommended Dilution

WB: 1: 500 - 1: 2000

ELISA: 1: 20000

Not yet tested in other applications.

Images



Western blot analysis of lysates from Jurkat cells, treated with UV 15', using Cyclin B1 Antibody. The lane on the right is blocked with the synthesized peptide.

Storage

-20°C for one year