

Cyclin B1 Polyclonal Antibody

Description

Product type	Primary Antibody
Code	BT-AP02345
Host	Rabbit
Isotype	IgG
Size	20ul, 50ul, 100ul
Immunogen	Recombinant Protein of Cyclin B1
Mol wt	48337
Species reactivity	Human, Rat, Mouse
Clonality	Polyclonal
Recommended application	WB, IHC-p
Concentration	1 mg/ml
Full name	Cyclin B1 Antibody
Synonyms	G2/mitotic-specific cyclin-B1

This product is for research use only, not for use in human, therapeutic or diagnostic procedure.

Background

The protein encoded by CCNB1 (cyclin B1) is a regulatory protein involved in mitosis. The gene product complexes with p34 (cde2) to form the maturation-promoting factor (MPF). Two alternative transcripts have been found, a constitutively expressed transcript and a cell cycle-regulated transcript, that is expressed predominantly during G2/M phase. The different transcripts result from the use of alternate transcription initiation sites.

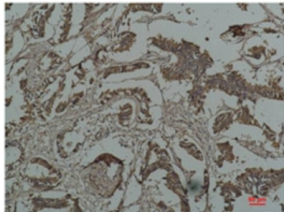
Recommended Dilution

WB: 1: 500 - 1: 2000

IHC: 1: 50 - 1: 200

Not yet tested in other applications.

Images



Immunohistochemical analysis of paraffin-embedded Human Breast Carcinoma using HSP27 Mouse mAb diluted at 1:200.



Western blot analysis of HeLa with HSP27 Mouse mAb diluted at 1:2,000. Secondary antibody was diluted at 1:20000

Storage

-20°C for one year

501 Changsheng S Rd, Nanhu Dist, Jiaxing, Zhejiang, China

Tel: 86 21 31007137 | E-mail: save@bt-laboratory.com | www.bt-laboratory.com