

Cyclin C Polyclonal Antibody

Description

Product type	Primary Antibody
Code	BT-AP02346
Host	Rabbit
Isotype	IgG
Size	20ul, 50ul, 100ul
Immunogen	The antiserum was produced against synthesized peptide derived from human Cyclin C. AA range:234-283
Mol wt	33243
Species reactivity	Human, Mouse, Rat
Clonality	Polyclonal
Recommended application	WB, ELISA
Concentration	1 mg/ml
Full name	Cyclin C Antibody
Synonyms	CCNC; Cyclin-C; SRB11 homolog; hSRB11

This product is for research use only, not for use in human, therapeutic or diagnostic procedure.

Background

The protein encoded by CCNC (cyclin C) is a member of the cyclin family of proteins. The encoded protein interacts with cyclin-dependent kinase 8 and induces the phosphorylation of the carboxy-terminal domain of the large subunit of RNA polymerase II. The level of mRNAs for this gene peaks in the G1 phase of the cell cycle. Two transcript variants encoding different isoforms have been found for CCNC.

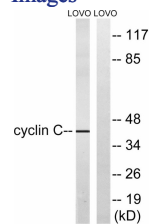
Recommended Dilution

WB: 1: 500 - 1: 2000

ELISA: 1: 5000

Not yet tested in other applications.

Images



Western blot analysis of lysates from LOVO cells, using Cyclin C Antibody. The lane on the right is blocked with the synthesized peptide.

Storage

-20°C for one year