

## Cyclin C Polyclonal Antibody

### Description

Product type	Primary Antibody
Code	BT-AP02347
Host	Rabbit
Isotype	IgG
Size	20ul, 50ul, 100ul
Immunogen	Synthesized peptide derived from human Cyclin C Polyclonal
Mol wt	33243
Species reactivity	Human, Mouse, Rat
Clonality	Polyclonal
Recommended application	WB, ELISA
Concentration	1 mg/ml
Full name	Cyclin C Antibody
Synonyms	Cyclin-C (SRB11 homolog) (hSRB11)

This product is for research use only, not for use in human, therapeutic or diagnostic procedure.

### Background

The protein encoded by CCNC (cyclin C) is a member of the cyclin family of proteins. The encoded protein interacts with cyclin-dependent kinase 8 and induces the phosphorylation of the carboxy-terminal domain of the large subunit of RNA polymerase II. The level of mRNAs for this gene peaks in the G1 phase of the cell cycle. Two transcript variants encoding different isoforms have been found for CCNC.

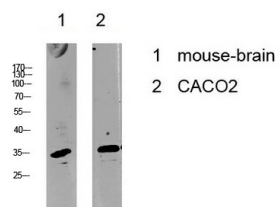
### Recommended Dilution

WB: 1: 500 - 2000

ELISA: 1: 10000 - 20000

Not yet tested in other applications.

### Images



Western blot analysis of various lysate, antibody was diluted at 1000. Secondary antibody was diluted at 1:20000

### Storage

-20°C for one year